

MOBILIZED.

Your guide to how a thousand pairs of helping hands made an impact in

UNION COUNTY

2018-2019 DONOR IMPACT REPORT

BOARD OF TRUSTEES

Alison G. Yablonowitz, Chairperson
 Thomas J. Ponosuk, Vice Chairperson
 Donald J. Bucciarelli, Treasurer
 Clarence W. Bauknight III, L.L.C., Secretary

Carlos J. Alma
 Anna Belin-Pyles
 Camille R. Douglas
 Geraldine N. Harvey
 Eric B. Levine
 Larry J. Lockhart
 Martin P. Melilli
 James L. Meyer
 Phyllis L. Mirabella
 Kevin Phoenix
 Dr. Lester Sandres Rapalo
 Roderick Spearman
 Patricia Perkins-Auguste (Emeritus)

STAFF

James W. Horne, Jr., President & CEO
 Juanita Vargas, VP, Programs and Operations
 Maggie Alvarez, Grants Accounting Coordinator
 Loretta Duhaney, Accounts Receivable/Payable Coordinator
 Tania Guaman, Project Manager, Healthy Plainfield; Newark EMA
 Dawn Jeglinski, Director of Finance and Grants Management
 Davon Johnson, Project Coordinator
 Talina Knox, Program Coordinator, Hillside Family Success Center
 Denise LaSpata, Community Resources Director
 Rishabh Madan, Data and Program Manager, YEPP
 Melanie McLaurin, Director of Marketing & Community Engagement
 Valerie Mohyla, Executive Assistant to the President
 Darryn Pulanco, Donor Relations Coordinator
 Vanessa Rodriguez, Program Assistant, Hillside Family Success Center
 Vicky Saguay, Administrative Assistant, Newark EMA
 Sobeida Soto, Program Coordinator, YEPP
 Jose Tobon, Project Coordinator, YEPP

CONTENTS

Letter to the Community	3
Your Generosity in Numbers	5
Leading the Charge (programs)	6-9
Your Impact in Numbers	10-11
In the Community	13
Purposeful Giving	14
Special Events	18
Mobilizing Forward	19
Donor Listing	20
Community Resource Network	23

Our Mission

United Way of Greater Union County's mission is to improve lives and build strong communities by uniting individuals and organizations with the will, passion, expertise, and resources needed to solve problems.

Our Vision

We envision a community where all children and families achieve their potential through education, income stability and healthy living.

OUR COMMITMENT

Our commitment is to change the odds so that all children and their families, regardless of their circumstances, have the same chance to succeed in school and in life.

A letter from the Board Chair and President #ATHOUSANDPAIRS

Dear Donors, Grantors, Volunteers and Newcomers,

A “thousand pairs” represents your care and investment in Union County. When we think about the county-wide reach of over 560,000 residents of which thousands have benefited from our work, it is your helping hands functioning simultaneously generating positive impact for those most vulnerable.

YOUR INVESTMENT CONTINUES TO INSPIRE AND MOBILIZE.

For almost a century, residents, community leaders, public officials and key stakeholders have *United* with us to strengthen our county. As partners in our charge to improve lives and build strong communities, you bring hope and energy to the fight for quality education, financial stability, health and family strengthening for every person. It is because of your voice, your energy and your tenacity, that we are able to continue creating and improving programs and services at some of the most complex levels.

From our work in youth employment where we helped in school and out of school youth ages 14-24, gain the tools necessary to thrive in education and sustain financial independence; to helping families navigate through some of the most difficult situations; to conversations we continue to foster as we ensure those we serve have access to healthcare including tackling issues affecting people living with HIV/AIDS.

Together as partners, we are MOBILIZED to empower the people of Greater Union County and beyond, and as you read through the pages of our 2018-2019 Donor Impact Report, please keep in mind that it is because of you, that those we serve can thrive.

In these ever-changing economic times, your support is a vital source of our success and we need your help as we continue to provide sustainable services for the people in our county now and for generations to come.

Thank you for supporting United Way of Greater Union County.

Yours Truly,

ALISON YABLONOWITZ
 Chair, Board of Trustees
 United Way of Greater Union County

JAMES W. HORNE, JR.
 President & CEO
 United Way of Greater Union County





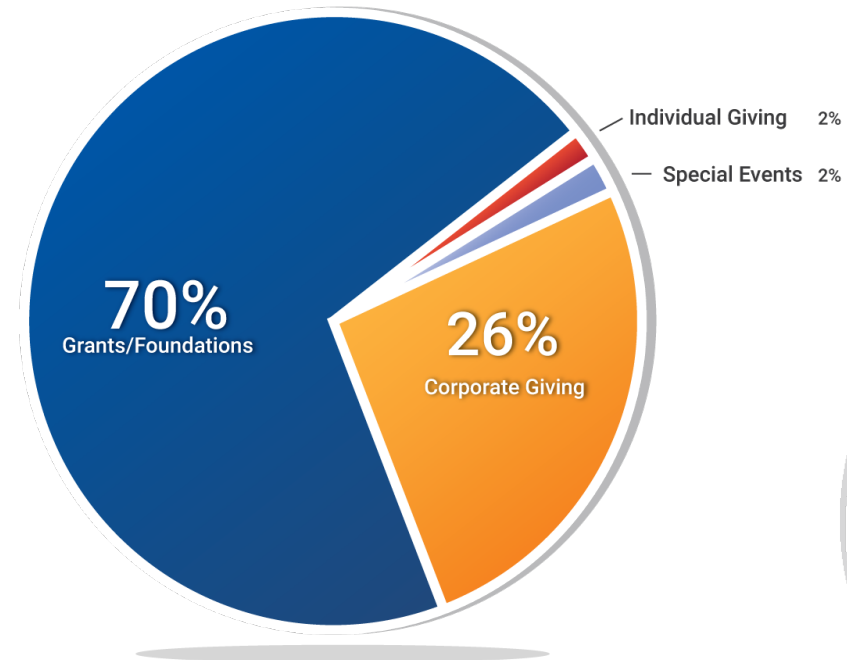
YOUR GENEROSITY



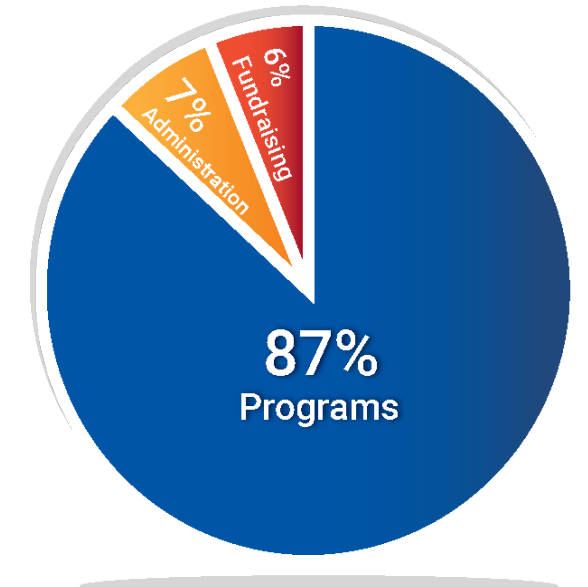
During the 2018-2019 fiscal year, United Way of Greater Union County was pleased to disburse over \$4.073 million to help strengthen the lives of children and families in Union County. We are grateful to the support provided by contributions, private and public grants and in-kind donations.

Your support ensures that we continue our efforts to improve the lives of children and families in Union County, North Plainfield and South Plainfield. Thank you for your generosity.

2018-2019 SOURCES OF FUNDING



2018-2019 EXPENSES



Audited financial statements are available on our website at uwguc.org/financial-information

LEADING THE CHARGE

"I like working with people, and [YEPP] helped me learn more about myself. Working with people is something I really want to do"

-Gennesy, Youth Employment Pathways Program Participant

DEVELOPING EDUCATIONAL AND EMPLOYMENT OPPORTUNITIES FOR UNION COUNTY YOUTH

United Way of Greater Union County's partnership with Make The Road New Jersey, for example, in the Youth Employment Pathways Program (YEPP) has helped provide teens like Gennesy with the tools necessary to pursue long-term career goals.

UWGUC developed YEPP through the support of the Union County Workforce Development Board and the Union County Board of Chosen Freeholders. The program has been instrumental in our work to help prepare youth for the 21st century workforce. In 2019, more than 300 youth received leadership development training, job placement, academic support and career planning services.

In the summer of 2019, UWGUC was awarded a grant from the State of New Jersey, through the Union County Workforce Development Board where 212 youth entered the workforce, many of them for the first time. The summer initiative provided youth with part-time summer jobs and included weekly training sessions in work readiness, leadership development, financial literacy and more.

212

Number of Union County high school youth who participated in a summer work experience

TRANSFORMING THE OUTLOOK ON ECONOMIC AND SOCIAL MOBILITY FOR YOUTH TO SUCCEED

Pictured above: L to R: Youth Employment Pathways Program youth, Yasmin and Amitra provided administrative support to employees at United Way of Greater Union County during the summer initiative.

Gennesy appears in our latest video, We Are United Way of Greater Union County, and can be viewed on our website at uwguc.org/we.

\$2.85M
 raised in grants and foundation funds to support programs and services

HELPING CHILDREN AND FAMILIES LAND ON THEIR FEET

OUR FAMILY STRENGTHENING MODEL

The Union County Family Strengthening Network (UCFSN) supports families facing barriers and creates opportunities for every person to succeed from birth to adulthood. The network is a unique public-private partnership between United Way of Greater Union County and businesses, government, schools, faith-based and non-profit organizations.

Through a robust partnership including the Wilf Family Foundation, the Department of Children and Families and the Union County Board of Chosen Freeholders, United Way of Greater Union County supports the Hillside Family Success Center, James Kellogg Multicultural Family Success Center, Rahway Family Success Center and the Village Family Success Center to provide vital services.

Our Family Success Centers provide wrap-around critical resources and services to families who find themselves in crisis. With the support from our Family Success Centers, each year, thousands of families receive services in job preparation and training, emergency funds for housing and food, social services, counseling, parent workshops and more.

SUSTAINING A CULTURE OF HEALTH IN PLAINFIELD

United Way of Greater Union County gained the support of the Robert Wood Johnson Foundation-New Jersey Health Initiative to establish the Healthy Plainfield Coalition. The Coalition works in partnership with the City of Plainfield and key stakeholders to build and maintain a comprehensive approach to healthy lifestyle living. In the past year, the Coalition has provided healthy workshops in diabetes, prevention and wellness programs and, nutrition education. Between November 1 and December 15, 2018, 750 families were assisted in the enrollment and re-enrollment process for federal health insurance plans. In order to increase access to fresh food, five distribution sites in the city were created where residents can purchase fresh fruit and vegetables. On average, over 1000 households per month receive free fresh food. The Coalition also developed a transportation directory so that residents can have access to the different types of transportation options. In addition, the Coalition supported the implementation of an online one-stop shop for community resources. Union Connects is a community website and an online search engine tool that provides resources to users looking for services available in housing, health, food, employment and more. Residents can search services by zip code, professional staff can create and track referrals and, administrators can analyze trends.



SUPPORTING UNION COUNTY'S VULNERABLE FIRST-TIME MOTHERS

A recent study suggested that Union County has one of the highest rates in infant mortality, low birth weights and teen pregnancy than other counties in New Jersey. Moreover, 21% of Union County's mothers do not receive early prenatal care.

less than \$17K for a family of two. On average, the nurse to family ratio is 15 to 1, serving a total of 247 families during the 2018-2019 fiscal year.

The Nurse-Family Partnership (NFP) provides home visitation services to vulnerable first time expectant mothers and their children. Women paired with specially trained nurses receive regular home visits and are provided with valuable resources and support needed for a healthy pregnancy. One hundred percent of the families served through NFP are at or below the federal poverty level, earning less than \$21K per year for a family of three and

OUTCOMES FROM SERVICES

- 67%** decrease in teen births
- 97%** of new mothers decided to breastfeed
- 92%** of mothers have a primary care provider
- 88%** of children are up-to-date on immunizations
- 96%** have been screened for lead

RYAN WHITE PROGRAM

United Way of Greater Union County provides administrative support to the Planning Council to ensure a system of care for all eligible persons living with HIV/AIDS in the Newark Eligible Metropolitan Areas. The Newark Services Planning Council serves residents of Essex, Morris, Sussex, Union and Warren counties.

Learn more about our programs and services on our website at uwguc.org and hover over "Our Impact"

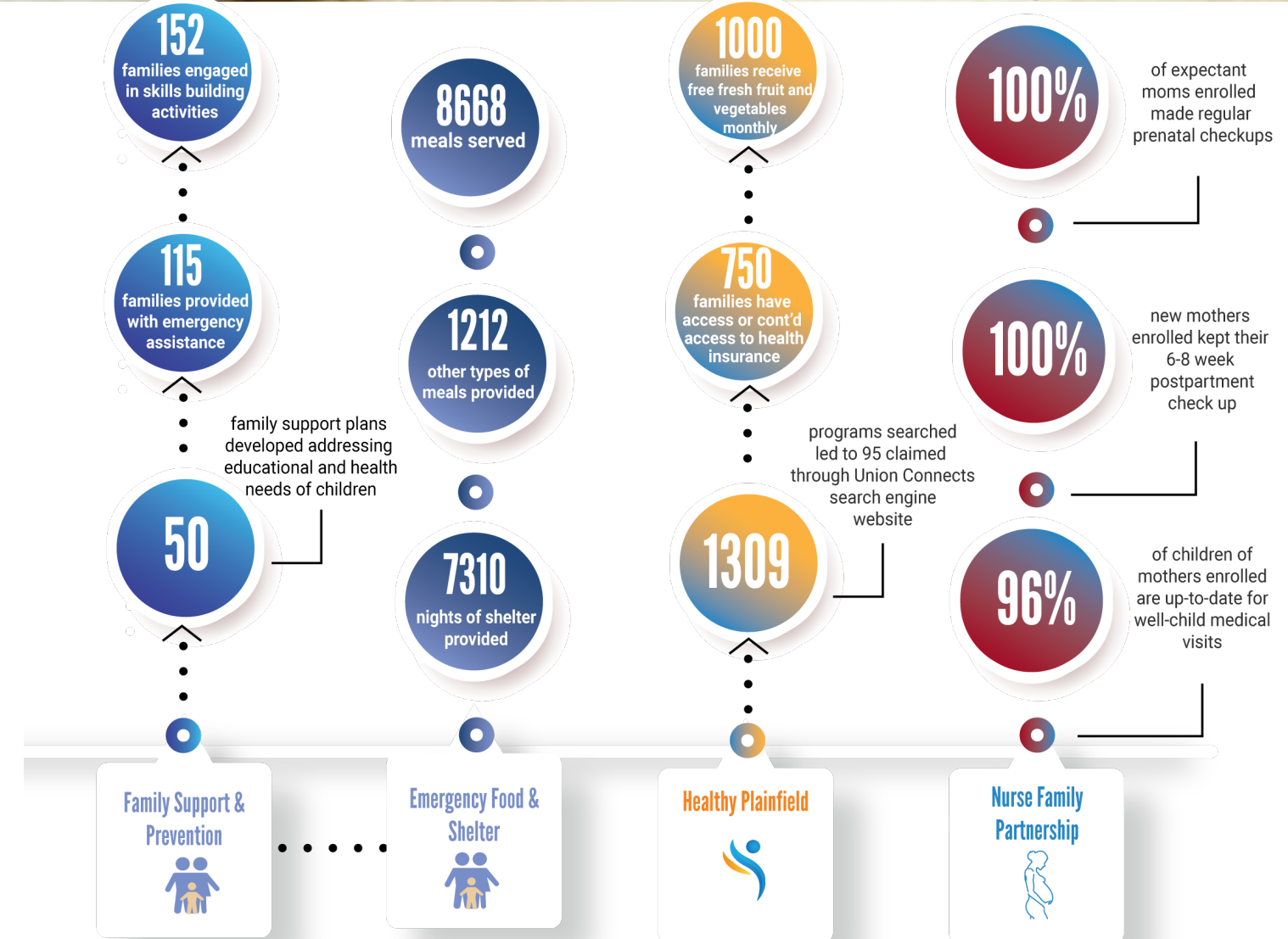
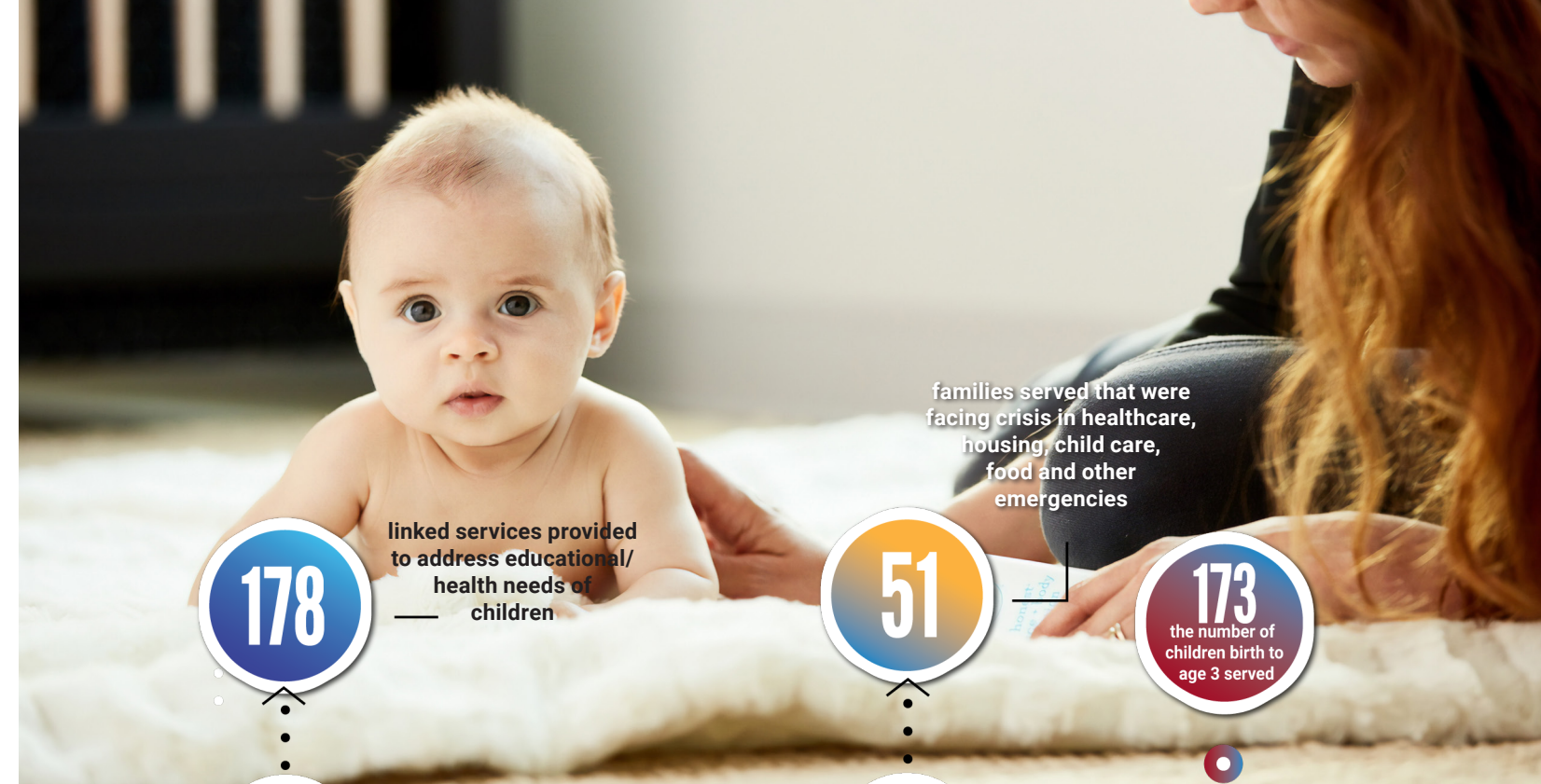
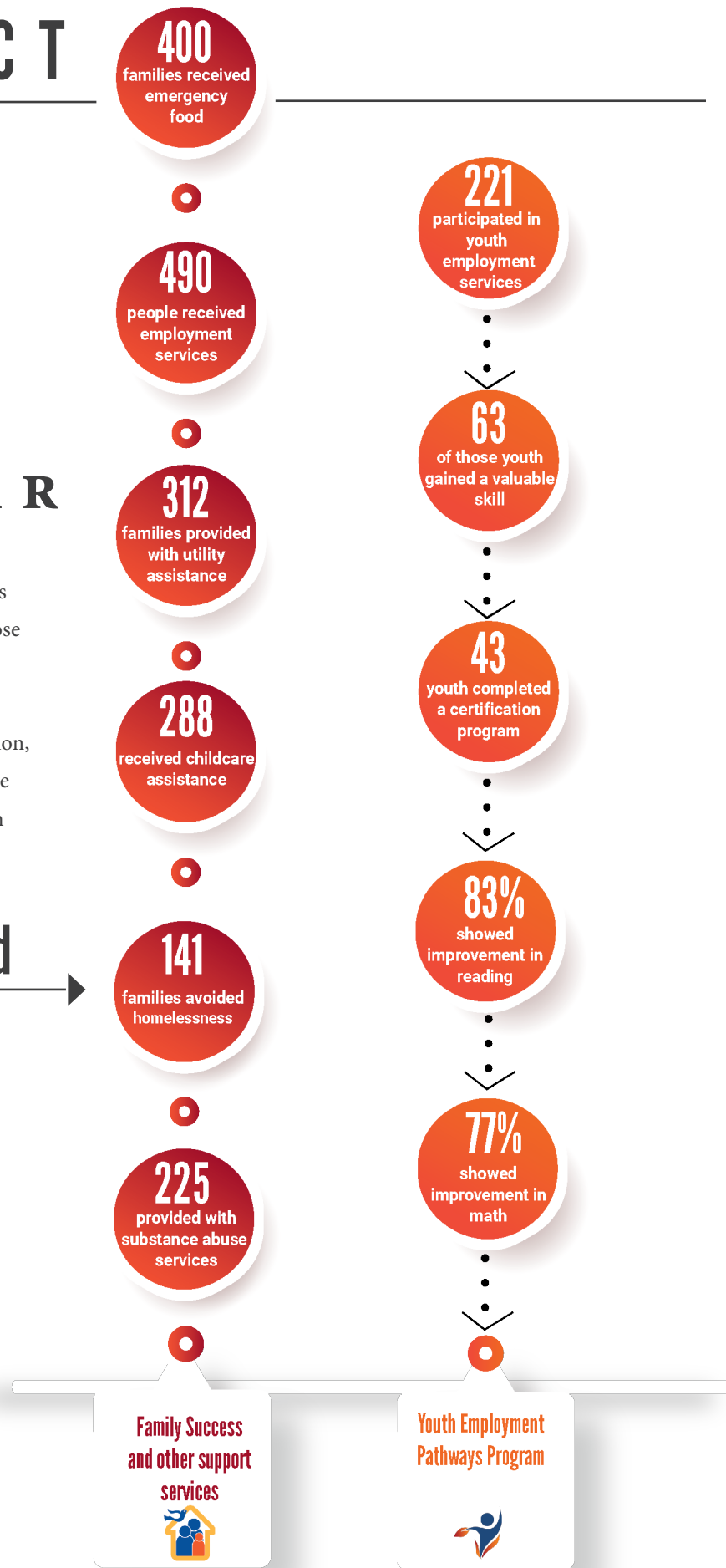
YOUR IMPACT

2018-2019 FISCAL YEAR

Thank you for supporting our efforts to improve lives and build strong Union County communities for those vulnerable residents.

You understand that having access to quality education, healthcare, housing, food and financial independence are not luxuries but vital resources that help children and families thrive.

Take a look at what you did





BRINGING JOY TO LITTLE HEARTS AND MINDS

IN THE COMMUNITY

GELLERT GLOBAL GROUP PARTNERS WITH UNITED WAY BACK TO SCHOOL DRIVE

In Elizabeth, NJ, employees at Atatlanta (right) donated 45 ready to learn backpacks to United Way of Greater Union County as part of a national partnership with Gellert Global Giving's back to school drive.

The Annual Back to School drive provided ready to learn backpacks for 600 children in Union County. In addition, United Way of Greater Union County partnered with Gellert Global Group, a leading food importing company with affiliates in the United States and Canada, to provide nearly 170 ready to learn backpacks collectively to benefit nonprofits in New Jersey, Miami, Los Angeles, Atlanta and Canada.



We are thankful to all our corporate partners, volunteers and leaders in the community that participated in the annual back to school drive.

MERCK EMPLOYEES GET INTO THE HOLIDAY SPIRIT

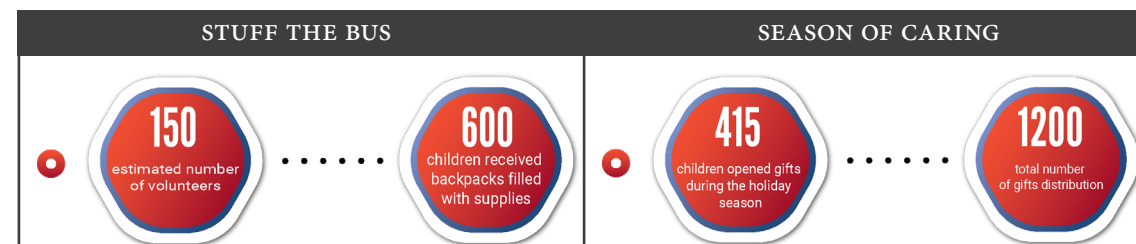
Employees at Merck provided 53 children with gifts in the 2018 Season of Caring drive. With each child receiving more than one gift, an estimate of 159 holiday wishes were granted, making Merck one of our treasured supporters of the annual initiative. Pictured below are employees from the Rahway and Kenilworth campuses.



Employees at Merck & Co, a multinational pharmaceutical company, finds our holiday wishes drive a joy. The employees are longtime supporters of Season of Caring and Back to School drives. Each year, employees from both the Kenilworth and Rahway campuses help spread holiday cheer and donate ready to learn backpacks to children all across our county.

We thank all of our corporate partners and volunteers who donated gifts for children during the holiday season. We especially thank Enterprise Rent-A-Car for providing delivery of gifts to children across Union County!

Nearly **3000** volunteer hours accumulated from companies and individuals in Season of Caring, Back to School drives, and other volunteer initiatives.



THE IMPACT OF A NATIONAL COMMITMENT AT THE LOCAL LEVEL

Wells Fargo has a long legacy as a national supporter of United Way and for the past 10 years, has been the number one workplace giving campaign at the national level. The company, through its business and foundation, uses its resources and expertise to solve complex societal problems and foster stability and financial success for underserved communities.

Through their generous support of United Way of Greater Union County, communities across Union County have benefited from their long standing and deep commitment to our mutual values. Employees at Wells Fargo participate in annual workplace campaigns and other giving initiatives in support of our mission and vision to strengthen our community.

However, their contribution extends well beyond philanthropic efforts. Wells Fargo's Tomas Porturas, Community Relations Vice President for Northern New Jersey, answered our request to help introduce a few basic principles in managing personal finances to high school students at the Plainfield Family Success Center in Plainfield, NJ, and the Hillside Family Success Center in Hillside, NJ. The students were participants in our Youth Employment Pathways Program (YEPP) and as part of its financial literacy component, volunteers from Wells Fargo presented their knowledge and expertise to youth in areas such as budgeting finances, saving money, opening bank accounts and financially preparing for college.

"Its important for the youth in our community and around the world to understand and receive financial literacy education. Understanding financial literacy will [help] support life choices, such as spending habits, managing credit appropriately as credit is needed for many things in life and as simple as how much a person need to save in order to survive in the event of a financial emergency."

-Theany Mateo, Branch Manager, Westminster Ave, Elizabeth, NJ

Wells Fargo tailored the workshops to be engaging, interactive and easy to understand, encouraging students to think about real-world experiences such as saving to buy a car or renting an apartment. Approximately 175 high school students benefited from Wells Fargo's help and their impact continues to grow with each passing year. We are grateful for their support.

\$1.06K
Corporate and
employee giving

A COMMUNITY MOBILIZED FOR IMPACT



Pictured above: L to R: Theany Mateo, Branch Manager, Westminster Ave branch in Elizabeth; Tomas Porturas, Community Relations Vice President for Northern New Jersey; and Deylis Linares, Newark Ave. Branch in Elizabeth

Not pictured: Maria Santos, Branch Manager at Broad Street location in Elizabeth; and Laura Anne Caron, Vice President, Senior Program Manager, Wells Fargo at Work organized Wells Fargo volunteers to present workshops to youth

EMPHASIZING COMMUNITY IN CAMPAIGN GIVING

L to R: Freeport McMoRan employees William Geissel, Plant Manager, Arvind Ravi, Project Engineer, Michele Sampson, Human Resource Manager, Amelia Hewko, Senior Customer Service Representative, Byron Light, Environmental Engineer, Michael Pahira, Senior Buyer

We are grateful for corporate partners like Freeport-McMoRan Bayway Operations who partner in our fight to help provide tangible resources for vulnerable Union County residents. Employees at the manufacturing and designing of copper/copper alloy products located in Elizabeth are long time campaign givers. During the 2018-2019 year, employees collectively increased their support by 280% from the previous fiscal year.

“By focusing on things our employees care about in our local community, it gets them really interested and engaged. We really emphasize that this is our community- these are our neighbors and they need our help and we have gotten a great response. At the end of a successful campaign, we emphasize to the



employees that YOU DID THIS, and we are all really proud of what we can accomplish together to help our community.”

said Michele Sampson, Human Resources Manager

The company also participated in our Back to School and Holiday Day Wishes drives providing ready-to-learn backpacks filled with school supplies and fulfilling the wishes of holiday gifts for children in Union County.

THE SUPPORTIVE COMMUNITY BANK



Roselle Bank employees in the community Hilary Vasconez (middle) and Ruth Rivera (right)

For over 20 years, Roselle Bank has supported our efforts to help strengthen the lives of children and families in Union County. For several years, the community bank with a huge heart has held collection drives that provided canned goods and other non-perishable foods for needy families during the Thanksgiving season. Roselle Bank were sponsors of our Back to School drive, helping to provide students with ready-to-learn backpacks and, also supported the YEPP Program, an initiative that focuses on providing at-risk youth with the necessary tools to graduate high school and secure livable wage jobs. We are proud and grateful for Roselle Bank’s continuous partnership and for their dedication to the communities they serve.

Learn how to become a corporate partner by visiting our website at uwguc.org/campaign.

THIS DONOR HAS CHANGED THE WAY WE THINK ABOUT INDIVIDUAL GIVING IN RETIREMENT

“They (donors) are giving through the United Way, they can be sure that it’s been checked out and is worthwhile and operating effectively”

-Robert Hasbrouck, Donor

\$82K

raised from individual giving



During the 2018-2019 year, we noticed that Robert Hasbrouck increased his annual donation to United Way of Greater Union County in a very significant way. When we contacted him to thank him for his generous gift, we began a conversation to learn about why he made such a leap. Hasbrouck, now retired, worked in Institutional Investments at Chase Manhattan Bank for 31 years. He provided investment management to institutions in pension funds and nonprofit organizations. A loyal friend to United Way for many years, he made a contribution through his Individual Retirement Account (IRA). “I am probably more tuned in than most people about tax matters,” Hasbrouck says. In previous years, he made his annual gift through his donor advised fund but he began receiving information about giving through IRA. “At the age of 70 ½ you’re required to start spending from your IRA and since I like to support charitable organizations it dovetailed with the opportunity to expand my charitable gift and get some tax benefit from it as well.”

Many retirees are making gifts this way.

What’s the benefit? Donations made by a traditional IRA are nontaxable. On the Fidelity Charitable website, it explains: A *qualified charitable distribution (QCD) allows individuals who are 70½ years old or older to donate up to \$100,000 total to one or more charities directly from a taxable Individual Retirement Account (IRA). If you have a required minimum distribution (RMD) and must take it each year even if you don’t need or want the funds, it enables individuals to fulfill their required minimum distribution by making a direct transfer to charity or multiple charities if one chooses. Donations made to qualified charitable organizations are not taxed and allows the donor to lower their tax bracket.*

When asked what advice if any he’d have for people 70 ½ and older, Hasbrouck says, “That if you don’t itemize deductions, it counts as a tax reduction in your federal taxes. If you do itemize, it can still hold down your adjusted gross income, it can prevent you from being boosted into a higher tax level. It can also help with your deductions from social security and Medicare. If you are charitably inclined,

this is certainly a way to give more to charitable institutions and benefit yourself while meeting your required minimum distribution”.

So why United Way? Hasbrouck quoted a recent article he read to which he surmised: “The article points to the fact that [United Way] vets various organizations that [it] supports, which relieves the donor of having to do that... [If] they are giving through the United Way, they can be sure that it has been checked out and is worthwhile and operating effectively”.

We are grateful to Robert for his long-standing support of our efforts. Hasbrouck has been married to his wife Astrid, for nearly 60 years. They have two daughters and two grandchildren. To learn more about giving through IRAs, visit uwguc.org/qcd.

U W G U C E V E N T S

Our signature events are designed to raise funds to benefit programs and services and are a great way to learn about our organization.

\$68K
raised in
special events

ANNUAL CELEBRATION

L to R: Union County Board of Chosen Freeholders, Bette Jane Kowalski, Rebecca Williams, Andrea Staten, Kimberly Palmieri-Mouded and Angela R. Garretson, 2019 recipients of the Community Impact-Traiblazer awards



Over 175 people were in attendance at the 2019 Annual Celebration on June 19, 2019. Each year, our signature event seeks to recognize the prior year's campaign and volunteers, government officials, community and business leaders who share in our vision and mission to improve lives and build strong communities.

The 2019 recipients were: Union County Board of Chosen Freeholders Bette Jane Kowalski (Chair), Angela R. Garretson, Kimberly Palmieri-Mouded, Andrea Staten and Rebecca Williams; Thomas Reedy, Executive Director of United Family & Children's Society in Plainfield; Debbie-Ann Anderson, Director, Union County Department of Human Services; Rising Star Awardees: Scarlette Gaudin, Brandon Givens, Alexandra Pereira and Emy Quispe. Corporate partners recognized: Freeport McMoRan, Wells Fargo, Comcast, Callan LLC, Enterprise, Lindabury, P.C, Roselle Bank, Becton Dickinson, Alpha Assembly and NuStar Energy.

ANNUAL GOLF OUTING

We are proud of our long-standing relationship with FedEx Ground employees who in addition to participating in workplace campaign giving, hosts the Annual Golf Outing each June. The 12th Annual Golf Outing was held on June 27, 2019 was a vital success. We encourage companies to host their own fundraising event and invite you to contact us with your ideas.

James Horne, right, pose with FedEx Ground employee and annual Golf Outing organizer, Stephen Gall



INAUGURAL LADIES THAT GIVE A HOOT DINNER

As part of our Women Leadership Council, on September 25, 2019, we held our Inaugural Ladies that Give a Hoot Dinner to help raise funds for needy women and children in Union County. This year's event benefited the Nurse Family Partnership, a program that deploys nurses to low-income areas to help first time mothers and their families. Ilise Zimmerman, President & CEO of the Partnership for Maternal and Child Health of Northern New Jersey and was the evening's guest speaker and Della Crews, Anchor at News 12, New Jersey was the event host.



L to R: Freeholder Alexander Mirabella; wife and Event Chair, Phyllis Mirabella, Della Crews and James Horne

The 2019 recipients were: Alison Yablonowitz, Assurance Partner, Ernst & Young; Aneesha Ghaly, Executive Director, Rahway Community Action Organization; Amy Wagner, Deputy County Manager and Director of Economic Development, County of Union New Jersey; The Plainfield Foundation; Trinitas Regional Medical Center and; Yesenia Santos, BSN, RN, CBC, Nurse Family Partnership.

Support of our events helps ensure the lives of children and families are strengthened. Learn more about our signature events at uwguc.org/events.

MOBILIZING FORWARD

United Way of Greater Union County funds a multitude of programs and projects to fill the sizable gaps that prevent families and children from progressing and achieving their potential to thrive.

PROVEN PROGRAMS AND SERVICES THAT TRANSFORM LIVES

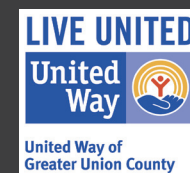
Through our most recent needs assessment and subsequent collective impact approach to solving problems facing Union County residents, we tackle issues effecting children and families including but not limited to: homelessness and other crisis situations, poor education, health disparages and lack of employment opportunities.

When you invest in United Way of Greater Union County, you stand UNITED for:

- ➔ Universal Pre-K and kindergarten being available to all in Union County.
- ➔ Affordable and adequate housing; crisis prevention.
- ➔ Training, networking, apprenticeship and job placement programs.
- ➔ Access to health education, insurance, preventative and dental care and prescription medicine.

If you pull just one child or family out of poverty and its downward spiral, you are creating a legacy with a ripple effect that will last generations.

Make an impactful investment in the future of families and children in Union County, North Plainfield and South Plainfield. Your contribution will allow us to fill the gaps and provide people the chance to thrive and achieve self-sufficiency.



GIVE. ADVOCATE. VOLUNTEER.

Visit our website at uwguc.org or call us at 908.353.7171 today.

Read *It's All About Filling the Gaps* on our website at uwguc.org/filling-gaps

THANK YOU FOR PROVIDING THE #BUILDINGBLOCKS FOR CHILDREN AND FAMILIES TO #SUCCEED

2018-2019 DONOR LISTING

We are grateful to all who donate their time, talent and resources to United Way of Greater Union County. All efforts have been made to list donor names correctly and regret any omissions or errors as we do not intend them to be a reflection of the value of your contribution to the success of our work. The following lists reflect individuals, grantors and organizations that donated between September 1, 2018–August 31, 2019.

WE ARE GRATEFUL for all donors and influential leaders who provide inspiration and motivation for others in caring for our community. The ripple effect from their generous gifts reaches all across our county changing the odds for children and families.

Below's listing is of United Way's Leadership Giving Society, created to recognize members of our community who demonstrate an exceptional commitment to helping others.

LA SOCIETE NATIONALE \$100,000 or more

Roderick H. Springer ESTATE

MEMBRE DE CONSUL \$10,000 - \$24,999

Robert Hasbrouck

James Meyer

Alison Yablonowitz

GOLD \$5,000 - \$7,499

Charles Goodfellow III

Mildred Viqueira
Callan & Associates Inc.

SILVER \$2,500 - \$4,999

Joseph J. Abrahams
NuStar Energy LP

Peter Callegari
Celgene Corporation

Alan & Carol Campell

Thomas Cooper
NuStar Energy LP

Nelson & Carolyn Dittmar

Anne Estabrook
David M. Kristol

James Horne Jr.
UWGUC

Bud Pellicchia
Callan & Associates Inc.

Annoesjka West
Callan & Associates Inc.

Andrew Vrigian

Ian S. Vaughan
NuStar Energy LP

BRONZE \$1,000 – \$2,499

Alexander Adashev
Fifth Third Bank

Bert Armeny
Infineum USA L.P.

Michael E. Aswad

Israel Ayala Jr.
NuStar Energy LP

Cindy Ballas

Bruce M. Baron

Anna Belin-Pyles

Austin Berry

Carl Bilgrien
Alpha Assembly Solutions

David M. Brennan
UPS

Robert & Valerie Brewster

Donald Bucciarelli

Stephanie G. Carmel
IBM

Bo H. Chao
Eli Lilly Sales Force-UW Cen. IN

Peter G. Chergotis
NuStar Energy LP

F. Chandler Coddington Jr.

Sandra Collazo
Celgene Corporation

Charles Crenshaw
UPS

Michael A. D'Aiuto
NuStar Energy LP

David P. Deibert
Enterprise Rent-A-Car

Joan Evans

Adrienne Farid
Celgene Corporation

Thomas Ferro
UPS

Mary Grace Finn
Wells Fargo

Kevin Floyd
Standard Textile Co. Inc.

Jonathan Garcia
UPS

Dewanna N. Graham
Brown Brothers Harriman & Co.

Julie Graybill
Celgene Corporation

William Gurbisz Jr.
NuStar Energy LP

Matthew Hoffmann
Celgene Corporation

Kristen Jensen
Celgene Corporation

Thomas F Kennedy Jr.

Stephen Kowitt

Lori Larocca
Enterprise Rent-A-Car

Sherry Leonard
Celgene Corporation

Eric B Levine

Lecia Lindsay
Costco

Amy Liss

Adam Lorentz
NuStar Energy LP

Brian L. MacClean
AGL Resources/ Elizabethtown
Gas

Edward T. Martin
Exxon Mobil

Elena McLane
Nationwide Insurance

Michael M. Paraskevas
NuStar Energy LP

Maria Paris
Celgene Corporation

Eric Perez
NuStar Energy LP

Kevin N. Phoenix
CFM

Dennis Poller PhD

Michael Previti
Alpha Assembly Solutions

Angelo Puerari
Santander Bank - Corporate

Timothy J. Roessler
NuStar Energy LP

Andrew Saporito
NuStar Energy LP

Heng-Hao Shih
Federal Reserve Bank of New York

Tom Shingler
Callan & Associates Inc.

Arkadiusz Sieczkowski
NuStar Energy LP

Janice Siegel

Susan Sloan-Ortiz
Celgene Corporation

Kimberly Smith
Comcast Cablevision of NJ

Deborah Holly Thomas
Celgene Corporation

John Traverse
Celgene Corporation

George Vella-Coleiro
CommScope, Inc.

\$1,000 – \$2,499 cont'd

Laura C. Vellucci
Johnson & Johnson

Corey A. Zeeger
NuStar Energy

Daniel Ziegler
Federal Reserve Bank of New York

Christopher Ziemian
NuStar Energy LP

CORPORATE GIVING TIERS

\$100,000 or more

Becton Dickinson
Munger Trust

\$75,000 - \$99,999

Joseph L Snyder Trust
The Wilf Family Foundation

\$50,000 - \$74,999

Wells Fargo

\$25,000 - \$49,999

J.C. Kellogg Foundation

\$10,000 - \$24,999

UWGUC- Endowment Fund

Enterprise Rent-A-Car

Freeport-McMoRan Cooper & Gold

Infineum USA L.P.

Nustar

TD Charitable Foundation

UPS

\$7,500 - \$9,999

FedEx Corp

\$5,000 - \$7,499

Alpha Assembly Solutions

Callan & Associates Inc.

Comcast Cablevision of NJ

Costco

Elberon Development Company

Glennay Trust

Pond Trust

Summit Area Public Foundation

\$2,500 - \$4,999

Johnson & Johnson

The Plymouth Rock Foundation

Union County Savings Bank

Waring Trust

\$1,000 – \$2,499

American Express

Blue Cross/Blue Shield

BMO Harris

Burling Chartable Fund

JOHNSTON GP INC.

N.J. American Water Company

Nationwide Insurance

PSE&G

Roselle Bank

Sanofi Aventis

The Principal Financial Group

Trinitas Hospital

Zurich North America National Prc.

**THANK YOU FOR
YOUR GENEROUS
SUPPORT!**

We thank local, state, municipal and federal agencies, as well as companies and foundations that join with United Way of Greater Union County on the many programs and engagement initiatives that benefit children and families across Union County.

The Union County Board of Chosen Freeholders has been a partner of United Way of Greater Union County for many years. Initiatives such as Focus on Families have helped to launch the Rahway Family Success Center and the James Kellogg Multicultural Family Success Center in Elizabeth. Other programs and initiatives in partnership include: the Youth Employment Pathways Program, Flex Funds, which provides one-time financial assistance to Union County families in need of food, clothing, shelter and other necessary services, the Union County Arts Program at the JFK Community Center in Rahway, Learning Mi Way Arts and, the Community Development Block Grant, which provides services to abuse and neglected children services, childcare, disable services, domestic violence and homeless services.

And with grateful thanks to all our corporate partners that participate in annual campaigns, engagement projects and volunteer efforts:

Admera Health
Aetna
Elizabethtown Gas
Alpha Assembly Solutions
Bank of America
Becton Dickinson
Boscov's Department Store LLC
Branning Collision Centers
Callan & Associates
Celgene Corporation
Cintas
Comcast
CommScope
Costco

CSC Plasma Inc.
DuPont Chemours
Eaton Corporation
Elberon Development Co.
Enterprise Holdings
Exxon Mobil
Fedex Corporation
First Energy
Freeport McMoRan
Gannett Fleming
Gellert Global Group
General Electric
General Motors
Genewiz

Infineum USA
Johnson & Johnson
Johnson Controls
Keystone Community Residence
Liberty Mutual
Lindabury, McCormick, Estabrook, & Cooper, P.C.
L'Oreal
Macy's
Maffey's Security Group
Merck & Co.
New Jersey American Water
Northfield Bank
Nustar Energy

Phillips 66
Pitney Bowes
Plymouth Rock Assurance
PNC Bank
Provident Bank
PSE&G
Raymour & Flanigan
Roselle Bank
Santander Bank
Solar Compounds Corp.
State Farm
Stop & Shop Supermarkets
Target
TD Bank

Tempil ITW
The Principal Financial Group
TJX Companies
Trinitas Regional Medical Center
Union County Savings Bank
UPS
Walmart
Wells Fargo
Williams Gas Pipeline Transco
Your Part-Time Controller

In addition, we are grateful to the following organizations for generously supporting of our efforts:

State of New Jersey
Department of Children and Families

The Ryan White Fund Part A
Federal Emergency Management Assistance (FEMA)

Foundations
Robert Wood Johnson Foundation- NJ Health Initiative

Union County
Union County Department of Economic Development
Union County Department of Human Services

Federal
Health Resources and Services Administration (HRSA)

Community Resource Network

Our partnership with non-profit organizations and governmental agencies help deliver human services to the community. Agencies in our Community Resource Network play a vital role in connecting each individual and family in Union County, North Plainfield and South Plainfield to the support they need. Our partners are:

CRANFORD
• Cerebral Palsy League
• Cranford Family Care

LINDEN
• Family Community Development Corporation

• InRoads to Opportunities
• Roselle Day Care Center

ELIZABETH
• Community Access Unlimited
• Elizabeth Coalition to House the Homeless
• FISH Hospitality
• Gateway YMCA
• Holy Redeemer
• Housing Authority of City of Elizabeth
• Jewish Family Service of Central New Jersey
• Make the Road New Jersey
• PROCEED, Inc.
• Salvation Army Elizabeth
• Urban League of Union County
• Urban Workforce Advantage
• Jefferson Park Ministries

PLAINFIELD
• Homefirst
• King's Daughter Day School
• Neighborhood House Association
• Plainfield Action Services
• Plainfield Board of Education Plainfield FSC
• Salvation Army Plainfield
• Second Street Youth Center
• United Family and Children's Society

RAHWAY
• Rahway Community Action Organization
• Rahway Day Care Center, Inc.

ROSELLE
• Boxwood Learning Center

SUMMIT
• Family Promise
• Junior League of Summit - GRACE
• The Connection for Women and Family

UNION TOWNSHIP
•YM-YWHA of Union County

COUNTY-WIDE PARTNERS
• Arc of Union County, Inc.
• Community Coordinated Child Care
• NJ 211
• Partnership for Maternal & Child Health of Northern NJ

•YWCA of Eastern Union County



33 West Grand Street • Elizabeth, NJ 07202
Tel: 908.353.7171 • Fax: 908.353.6310 • uwguc.org

United Way of Greater Union County (UWGUC)

is dedicated to finding effective ways to help children and families gain access to quality education, financial stability, health and family strengthening in Union County, North Plainfield and South Plainfield. We are committed to helping build up our county so that everyone has the opportunity to grow and thrive in every aspect of their lives.

STAY CONNECTED



Search: United Way of Greater Union County

WHAT YOU CAN DO TODAY GIVE. ADVOCATE. VOLUNTEER.

Make a monetary or in-kind contribution to United Way of Greater Union County.

Make change happen by getting informed, educating friends and showing your passion about local issues that matter to you.

Volunteer at a local non profit, soup kitchen or homeless shelter. We assist groups from our community and business sector.



Smartphone users:
Scan it. Donate.