

2016-2017 Annual Report  
[uwguc.org](http://uwguc.org)



creating new

**p****ossibilities.**  
Assessing challenges and redefining solutions





Photography by Delilah Williams

# LIVE UNITED

thank you for creating  
**possibility**



## Dear Friends,

This past fiscal year, United Way of Greater Union County has made significant impact on the lives of those we serve all across greater Union County, North and South Plainfield, New Jersey. Through our partnerships with key stakeholders, companies, individual donors, organizations at the local, state and federal level, we are ever closer to building up our community so that everyone has the opportunity to grow and thrive in every aspect of their lives.

The strides we've made founded on our pillars: **education, income stability, health and family strengthening** are made possible by our developing and existing partnerships, forged by trust, the sharing of knowledge and capacity.



As you read through the pages of this year's Annual Report, you'll learn about the collaborations we've created, the people who are touched by the work we're doing and friends who understand, just as you do, our mission to improve lives and build strong communities. People like Roberto, who struggled when he first arrived from Ecuador, but through the Youth Employment and Training Consortium program, he is now gainfully employed and is a first year student at Kean University or, people like Charles Goodfellow, who started out volunteering for United Way when he was a child, but through the years has become one of our most dedicated and generous supporters. You'll also read about community conversations we've started, such as our work with Plainfield community leaders in addressing barriers affecting its residents and finding solutions for a healthier and sustainable community; and most recently, bringing folks together from many different regions in the state in order to

tackle issues affecting people living with HIV/AIDS. Through your commitment as a donor, a partner, a volunteer, an advocate- you've helped to create endless, unyielding possibilities for our community to grow.

Like so many nonprofit organizations, we continue to face difficulties sustaining in these ever changing times and support from the community is vital to our success. In the coming year, we are strategically looking at our mission and will begin to refocus our efforts so that we remain viable.

Although we've made significant progress, there's still so much to do as we get closer to the kind of community we can all be proud to live and work. Your community. We need you to be the voice for all those that don't have a voice. We hope our report will reaffirm your commitment to our efforts or; if you're new to our work, compel you to get involved. We ask that you continue Standing United with us as we create new possibilities for those in need- now and for years to come.

Thank you for your support and we look forward to another successful year as we continue building Stronger Families and Stronger Communities.

Yours Truly,

**Alison Yablonowitz**  
Chair, Board of Trustees  
United Way of Greater Union County

**James W. Horne, Jr.**  
President & CEO  
United Way of Greater Union County



# who we are

**A COMMUNITY CONNECTOR. A STRATEGIC PARTNER. A FUNDER.**

## Our Mission

**United Way of Greater Union County's** mission is to improve lives and build strong communities by uniting individuals and organizations with the will, passion, expertise, and resources needed to solve problems. Serving Union County, North Plainfield, and South Plainfield we focus on:

- Increasing awareness on issues affecting a community
- Coordinating community members to take action
- Creating coalitions to work together on identified community issues
- Using data to fund services
- Ensuring quality of the work
- Ensuring efficiency of resources available
- Advocating for changes with local, county, state and federal leaders
- Raising funds to support efforts

## Our Vision

We envision a community where all children and families achieve their potential through education, income stability, healthy living.

- Where all children receive a quality education that offers a pathway to a brighter tomorrow
- Where the cycle of poverty and financial dependence ends and more productive lives begin
- Where all children and families have access to affordable health services and healthy activities that improves their quality of life
- Where all families' basic needs of food, shelter, health and safety are met

## Our Commitment

Our commitment is to change the odds so that all children and their families, regardless of their circumstances, have the same chance to succeed in school and in life.



# our organization

## board of trustees

Chairperson: Alison G. Yablonowitz  
Vice Chairperson: Thomas J. Ponosuk  
Secretary: Clarence W. Bauknight III, L.L.C.  
Treasurer: Donald J. Bucciarelli

Anna Belin-Pyles  
Stan Borowiec  
Dr. Carmen Centuolo-Musial  
Camille Douglas  
Tina M. Earley  
Joan M. Evans  
Frank Guzzo  
Geraldine N. Harvey  
Robert E. Hopkins  
Anadir E. Liranzo  
Bertha Little-Matthews  
Larry J. Lockhart  
Martin P. Melilli  
James L. Meyer  
Patricia Perkins-Auguste  
Kevin Phoenix  
Kimberly Smith  
Roderick Spearman

## staff

James W. Horne, Jr., President & CEO  
Juanita Vargas, VP, Programs and Operations  
Phillip Daniels, Corporate Relations Director  
Dawn Jeglinski, Director of Finance and Grants  
Denise LaSpata, Community Resources Director  
Melanie McLaurin, Director of Marketing & Community Engagement  
Dr. Ken O'Bryant, Project Director  
Charlene Bathelus, Community Impact Manager  
Stephen Yellin, Individual Gifts Manager  
Loretta Duhaney, Accounts Receivable/Payable Coordinator  
Brianna Bethea, Youth Coordinator  
Eugenia Providence, Operations/Human Resources  
Valerie Mohyla, Executive Assistant

*United Way of Greater Union County,  
strengthening families since 1969.*

# table of content

<b>Letter to the Community</b>	<b>3</b>	<b>Donors tell their stories</b>	<b>22</b>
<b>Our Mission, Vision &amp; Commitment</b>	<b>4</b>	<b>Annual Celebration</b>	<b>26</b>
<b>Board of Trustees and Staff Listing</b>	<b>5</b>	<b>Financials</b>	<b>27</b>
<b>Fiscal Year 2016-2017 Highlights</b>	<b>6</b>	<b>Donor Listing</b>	<b>28</b>
<b>Our work</b>	<b>8-18</b>	<b>Ways to Support</b>	<b>32</b>
Fighting for Education	9		
Family Strengthening Network	10		
Financial Independence	12		
Health and Wellbeing	16		
Engagement Projects	18		
<b>Volunteer and Advocacy</b>	<b>20</b>		



# Highlights

## FY 2016-2017



### Food on the Table

Reducing food insecurity in Union County.



Over **6100** individuals receive food

Over **15,000** meals are provided annually

### Success in Schools

Improving educational outcomes for Union County children and young adults.

Over **1200** children/young adults improved their educational outcomes

**1000** children attend early education programs

**500** children participate in educational after school programs

**120** young adults participate in GED classes and/or ESL classes



### Financial Independence

Ensuring Union County families are financially independent.



Over **2500** individuals participate in work readiness, job search, job fairs, and other workforce development activities

**120** young adults receive counseling, job readiness, educational programs, and/or occupational training to ensure they secure livable wage jobs.

### A Safe Place to Sleep

Preventing homelessness and/or providing shelter to over 1300 Union County residents

Over **1000** individuals are sheltered every year

**250** families stayed housed (homeless prevention)



### A Healthy Life

Supporting improvements in health for the most vulnerable residents.

Over **3600** residents participate in services that support their health outcomes  
Activities include:

- Health screenings
- Nutrition education
- Ensuring access to services (transportation, translation)
- Diabetes monitoring
- Monthly health assessments for patients with developmental disabilities
- Increasing exercise







our  
**work**

Education  
Family Strengthening  
Income Stability  
Health and Well Being

Photography by Delilah Williams

fighting for success in

**education**

## Investing in quality education

Our work guides us to partner with non-profit agencies all across Union County in the areas of health, income stability, everyday necessities of life and education. We've been able to fight for educational success by assisting **13 non-profits** and help more than **2800 children achieve their highest academic potential.**

One such place is **The King's Daughters Day School (KDDS)**. Now celebrating 111 years of service to families in Plainfield NJ and surrounding communities, KDDS provides full-time year round care and education services to the city's low to moderate-income families. A multi-dimensional program for children between the ages of 12 months to 13 years old, programs include mobile Infants/Toddlers, Preschool, Before & After School, Music, Sick Child Care and Summer Day Camp. Also offering family support, the program provides early care and education to at least **160 mobile infants, toddlers and preschool age children on a daily basis.** Socioeconomically, **87% of the families have an annual income of less than \$30,000.**



Preschoolers at King's Daughters Day Care are happy to receive Ready-to-Learn backpacks during Stuff the Bus

Photography by Delilah Williams



# family strengthening network

A unique public-private partnership between United Way of Greater Union County, businesses, government, schools, faith-based and non-profit organizations and foundations, the Union County Family Strengthening Network (UCFSN) partners to break down barriers for families and create opportunities for every child to succeed every step of the way from birth to adulthood.

Within UCFSN, includes our four Family Success Centers and 40 nonprofit partners that support early education programs, after-school initiatives, emergency food and shelter for families in crisis, homeless intervention services, support services for adults with disabilities, workforce development services and much more.

United Way of Greater Union County's operating Family Success Centers (FSC) are multi-service organizations providing critical resources and supports to families and children around a continuum of care, from birth to adulthood- and are located in Union County.

Our partnership with non-profit organizations and governmental agencies help deliver human services to the community. Each agency in our Community Resource Network plays a vital role in connecting each individual and family in Union County, North Plainfield and South Plainfield to the support they need.

## Our Family Success Centers(FSC)



- Hillside Family Success Center (Hillside)
- Rahway Family Success Center (Rahway)
- James Kellogg Multicultural Family Success Center (Elizabeth)
- Jefferson Park Family Success Center (Elizabeth)

## Community Resource Network

- ARC of Union County
- Atlantic Health/Overlook Hospital Family Service
- Catholic Charities of the Archdiocese of Newark
- The Cerebral Palsy League, Inc.
- Communities in Cooperation
- Community Access Unlimited
- Community Coordinated Childcare of Union County
- The Connection
- Cranford Family Care Association
- Elizabeth Coalition to House the Homeless
- Family Community Development Corporation
- FISH Hospitality
- Holy Redeemer Home Care
- HOMEFIRST
- Occupational Center of UC (Inroads to Opportunity)
- Jefferson Park Ministries
- Jewish Community Center of Central New Jersey (JCC)
- Jewish Family Service of Central New Jersey
- Junior League of Summit
- King's Daughters Day School
- Literacy Volunteers of UC Inc.
- Neighborhood House Association
- NJ-2-1-1
- Partnership for Maternal and Child Health
- Plainfield Action Services (PAS)
- Plainfield Board of Education – Family Success Center
- Plainfield YMCA
- Prevention Links – Roselle Family Success Center
- PROCEED, Inc.
- Rahway Community Action Organization (RCOA)
- Rahway Day Care Center, Inc.
- Roselle Day Care Center
- Salvation Army-Elizabeth
- Someone's Daughter, Inc.
- United Family and Children's Society
- Urban League of Union County
- YMCA – Eastern Union County (Gateway)
- YM-YWHA of Union County
- YWCA Eastern Union County

We are leading the way in providing critical resources to children and families.

Since its inception in 2008, our **Family Success Centers** have **served over 10,000 families** combined.



## Jefferson Park Family Success Center

Housed in the Community Access Unlimited building in Elizabeth, NJ, the Jefferson Park Family Success Center is a wrap-around multiservice organization where residents can receive resources and supports before they find themselves in crisis. Like all of our Family Success Centers, at Jefferson Park, services include ESL classes to learn English, computer classes, financial literacy and a family strengthening program.

Yveson came to Jefferson Park Family Success Center in January 2017. When Yveson arrived in the United States from Haiti, he did not speak any English and found it difficult to find employment. Within a short period of time, he was able to obtain resources needed to find employment including, work authorization and a social security card. Yveson is now working full-time.



Yveson (middle), pictured with Marie Jean Bapiste, Family Worker (left) and Jean Benoit, Director



# income stability

In 2015 and 2016, the Union County Board of Chosen Freeholders and the Workforce Development Board awarded United Way of Greater Union County a Workforce Innovations and Opportunity Act (WIOA) grant to coordinate the Youth Employment and Training Consortium (YETC) and to implement the Youth Employment Pathways Program (YEPP). The consortium currently includes 13 organizations, of which five are sub-grantee nonprofit partners: Community Access Unlimited, Urban League of Union County, Inc., PROCEED, Inc., HomeFirst, Inc. and Plainfield Action Services. Agencies provide direct service to participants between the ages of 14-24 who are at risk of not graduating high school and/or who are currently not in school or working., The program seeks to identify/address barriers and participants work

towards obtaining a credential, enter higher education and/ or secure employment. Currently, there are 65 young persons enrolled in YEPP and since its inception, **approximately 143 youth have completed the program**. UWGUC and our sub-grantee partner agencies work together with youth to guide and support them as they achieve personal and professional success.

Program includes workshops focused on job readiness, financial literacy and occupational training programs to obtain certifications and secure livable wage jobs. Participants can also earn their GED, obtain full-time employment and receive assistance on how to enroll in college. Here are some examples of the positive impact being made:

## Step by Step

Shayram, an Administrative Clerk at one of our partner agencies, PROCEED, Inc. located in Elizabeth, NJ recalled learning about the organization (Proceed) several years ago. However, at the age of 16, Shay found herself looking for work and thought PROCEED could help her achieve her goals. *“We received training on how to interview for a job and how to write our resumes,”* she said.

Shay currently works in PROCEED’s health department, where among other duties, helps prepare training programs for the organization. The best part of her job... *“I get to do a variety of things. I’m always busy working in many different areas.”* Shay is grateful for PROCEED and the YEPP program because *“programs like this gives opportunities and gives you hope.*



Step by Step cont’d...

*I’ve made connections, networked and they help you, step by step.”*

This past May, Shay earned an Associate’s Degree in Biology from Union County College and in the spring, plans to attend Rutgers University where she’ll continue her studies. Her plans...*“the medical field, I want to be a Pediatrician”.*

## Focused and Consistent

Governor, a Plainfield resident, enrolled in the Youth Employment Pathways Program (YEPP) this past spring through our partner agency, the Plainfield Action Services located in Plainfield, NJ. He said he entered the program because he wanted to help provide for his family.

Currently, Governor is a Community Survey Intern and in this role, he determines if a property appears vacant and/or abandoned and presents collected data to the community in a series of solution building community roundtables. He’s earned the job through YEPP and most recently completed a Certificate of Security Officer License, something he’s wanted for a long time. *“I’m a certified security guard”,* he said.

He says that being a part of YEPP *“helps you to be focused, stay consistent and (obtain) financial independence.”*



City of Plainfield Dept. of Administration, Finance, Health & Social Services Director, Ron West stops in to congratulate Governor.

Photography by Delilah Williams





## Fighting for his Goals

When Roberto first came to the United States from Ecuador, he didn't speak any English. Now nearly two years later, Roberto has mastered the language and is currently a first year student at Kean University pursuing a Bachelors of Science degree in Global Business.

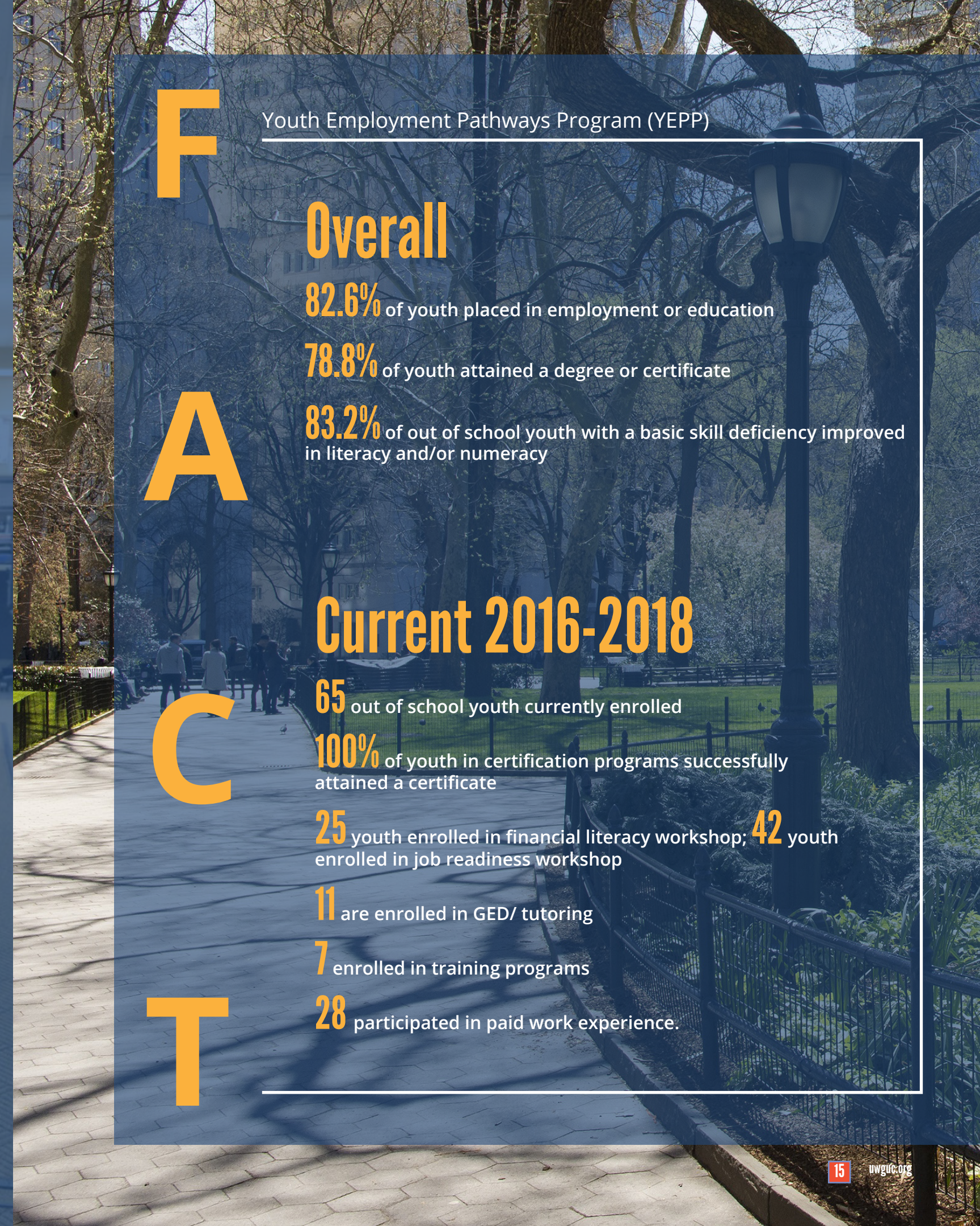
Initially, Roberto entered YEPP because he wanted to find employment, but he's earned so much more. Roberto was able to take English classes (ESL) at Union County College and secured employment at PROCEED, where he helps prepare trainings and assists with bookkeeping and data entry. *"I like math."*

Roberto has learned invaluable skills he needs to pursue his dreams and beyond. His thoughts about those that guided him through and to others who might be interested in enrolling in the program, *"They will help you fight for your goals."*



L to R: Srabanti Sarkar, Director of James Kellogg Multicultural Family Success Center, Robert, Shayram and Mercedes Quintana, Case Manager

Photograph of Roberto (left) by Delilah Williams



### Youth Employment Pathways Program (YEPP)

**F**  
**Overall**

**82.6%** of youth placed in employment or education

**78.8%** of youth attained a degree or certificate

**A**  
**83.2%** of out of school youth with a basic skill deficiency improved in literacy and/or numeracy

**Current 2016-2018**

**C**  
**65** out of school youth currently enrolled

**100%** of youth in certification programs successfully attained a certificate

**25** youth enrolled in financial literacy workshop; **42** youth enrolled in job readiness workshop

**11** are enrolled in GED/ tutoring

**7** enrolled in training programs

**T**  
**28** participated in paid work experience.



We are dedicated to providing health and human service resources and are committed to strategically working to collaborate with leaders in the communities to improve health and well-being for all throughout Union County.

# Community Collaborations

United Way bringing communities together



**Healthy Plainfield** is a coalition consisting of a cross-sector of faith based agencies, the Public School District, the Health Department and other key stakeholders to focus on sustainable change led by the community for the community. In 2016, we received support from the Robert Wood Johnson Foundation-New Jersey Health Initiative to improve health outcomes for all residents in Plainfield. The priorities areas are obesity, education and access to care. A blue print was developed to focus on creating awareness about healthy lifestyles; increasing levels of educational attainment; reducing barriers to increase the number of people accessing services and; putting systems in place to effectively communicate with Plainfield residents.

**Lifelong Plainfield** funds programs that benefit seniors to independently age in place. UWGUC and Springpoint Senior Living received support from the Grotta Foundation for Senior Care on behalf of the City of Plainfield. An advisory council consisting of the city's Parks & Recreation and Senior Center, Department of Aging, the Housing Authority and other key stakeholders was established to address barriers seniors face. Research revealed that improving access to information about services and events; access to healthy, affordable and nutritious food and; improving access to transportation were priorities of focus. An Action Plan was developed to address and improve the focus areas.



Both initiatives have sparked support and a few next steps include:

- Increasing public will, awareness and support for both initiatives, with an eye for sustainability and systemic change
- Increasing access to information
- Formalizing Committees and implementing an oversight structure for all strategies, measuring progress, and reporting to the community
- Identifying additional resources to implement, expand, and/or support strategies
- Establishing priorities with school district
- Supporting the faith-based community to become Champions of Lifelong Plainfield and Healthy Plainfield
- Establishing an engagement strategy all members of the community



As part of the Ryan White Part A Program, UWGUC provides administrative support to the Executive Committee and 5 sub-committees to ensure a system of care for all eligible persons living with HIV/AIDS in the Newark Eligible Metropolitan Areas. The **Newark HIV Health Services Planning Council** serves residents of Essex, Morris, Sussex, Union and Warren Counties. Working with the State of New Jersey and the City of Newark, UWGUC supports the work of the Planning Council by:

- Setting priorities that inform the allocation of resources
- Developing a comprehensive plan of action
- Assessing the efficiency of the administrative mechanism
- Developing Standards of Care and evaluating services
- And providing administrative, facilitation, and logistical support

# health & well being in our communities

## Access to Fresh Food

Our efforts to address food insecurities in the communities we serve have led to supportive partnerships with agencies and various organizations to help provide fresh food to children and families. For example, in Summit and Plainfield, we helped coordinate the Community Food Bank of New Jersey's Family Pack Program which provides food to students and their families on the weekend.

**Summit's** GRACE (Giving and Receiving Assistance for our Community's Essentials) Food Relief Program, a Union County Focus on Families initiative approved by the Union County Board of Chosen Freeholders to mobilize the greater Union County community to integrate economic and workforce development and, family support strategies to assure that all families have access to resources and supports they need, serves 55 families per week. Since the GRACE Refrigerator opened in September 2016, we've helped to provide **52,254 pounds of produce, dairy, bread, and prepared food, feeding 8,584 individuals: 4,458 children and 386 senior citizens.** GRACE's Backpack provides weekend food distribution based on the Community Food Bank of New Jersey's Family Pack program. During the 2016-2017 school year, **Grace's Backpack program distributed over 102,500 meals: 1972 packs, serving 68 families each week on average. During the summer, 77 bags of groceries were distributed at Summit camps.**

Since 2015, the Food Pack Program in **Plainfield** has been a partnership between UWGUC and the Plainfield Board of Education-Family Success Center through the Community Food Bank of New Jersey's Family Pack program. This partnership helped to identify four schools in need, helping to provide food to students and their families on the weekend. Each Fall, **50 families** from each school are selected and pre-packaged meals are discreetly distributed every Friday. **"Through the Family Pack Program, we are able to assist approximately 200 families with food every weekend."** said, Sequoia Young who coordinates the Family Pack Program at Plainfield Board of Education-Family Success Center. **Last fiscal year, the Food Pack Program distributed 41,600 meals to families.**







successful engagement

# projects

# 2017



## Over 500 children served during Stuff the Bus

United Way of Greater Union County is committed to quality education and fight for success at every academic level. Our national Stuff the Bus campaign is designed to provide low-income children with new school supplies- tools they'll need when they enter the classroom. During our stuff the bus campaign in August, over **500** children in Union County received Ready-to-Learn backpacks filled with school supplies. This year's initiative garnered support from corporate, individual donors and elected officials such as Mayor of Elizabeth Chris Bollwage, Assemblywoman Annette Quijano, Freeholder Bruce Bergen and so many more. During volunteer day, **20** volunteers from companies such as FedEx, Northfield Bank and Santander Bank showed up to help stuff backpacks! With special thanks to the Rahway Community Action Organization for hosting Volunteer Day, to Santander Bank for contributing the most school supplies and for helping us deliver backpacks and to Villani Bus Company for providing the school bus! Special thanks to those who donated backpacks and school supplies including Comcast, Lerner David LLC, Lindabury, NuStar Energy, Genewiz, CR Bard, Roselle Savings Bank, Target and Plymouth Rock.



our Holiday Wishes drive. A true inspiration to us all- **more than 1000 children were served**. The number of gifts acquired collectively tripled- more than in any previous year! With special thanks to Enterprise Rent-A-Car for helping us to deliver toys and a special thank you to Investors Bank for sponsoring the 2016 Season of Caring!

## Empowering young women through non-traditional career paths at the

## Celebration of 2017 WOMANHOOD



Photography by Delilah Williams

For more than **5** years, the Annual Celebration of Womanhood Conference has been an empowering one-day conference for 300 young women between 13-17 years old. Designed to give them a unique opportunity to learn about non-traditional career paths in science, technology, engineering, arts, media, mathematics, politics and so much more, over the years, the conference has proven to be a resourceful tool for more than **1500** teens residing in Hunterdon, Monmouth, Mercer, Union, Middlesex and Ocean counties.

In June 2017, over 300 young women attended the conference entitled: *Glass Ceiling Breakers of the 21st Century*, at the prestigious Princeton University and featured some of the most influential women in New Jersey such as Congresswoman Bonnie Watson

Coleman; beauty expert, Founder and CEO of BOLDrich, LLC, Santasha Wynter and Board-Certified Family Physician and owner of a private practice, Dr. Lisa Herbert.

Every year, the conference is made possible by the New Jersey Juvenile Justice and Delinquency Prevention Committee and hosted by United Way of Greater Union County and for the last two years, United Way has collaborated with Someone's Daughter, Inc. With special thanks to sponsors Ernst and Young, PSEG, Comcast, Northfield Bank and PNC Bank.

## Our largest Season of CARING yet

In an effort to brighten the lives of children in need, United Way of Greater Union County hosts its annual drive to help provide gifts for children in Union County, North Plainfield and South Plainfield. During fiscal year 2016-2017, our Season of Caring initiative got off to a great start with **14** corporate partners participating in



we are grateful for

# volunteers

because when you lend your muscle,

you change someone's life.



## Empowering young people to give back in meaningful ways

Our partnership with Linden High School's Youth for United Way spans over 26 years with Esther Paden, teacher and Program Coordinator, at its helm. "I wanted to create a more inclusive type of club, to bring all kids at all academic levels together", she said. With our blessing, the club began in 1991 when Dell Raudelunas was the President of United Way of Greater Union County. Over the years, students have participated in a variety of community service activities guided by Paden, many of which are still in existence. Activities such as food, clothing and toy drives, domestic violence/teen dating awareness projects, reading to children at some of our funded nonprofit agencies and even their own

Day of Caring have as Paden says... "brought students together for a meaningful learning experience".

Now retired, Paden says she'll miss... *"seeing the impact service brings that will carry with them for the rest of their lives"*. She recounts a heartfelt story that happened some years ago where the group volunteered at a homeless shelter and how it affected one student so much that on his own time, he brought his family back to volunteer. The Youth for United Way club plans to continue and we look forward to our continued partnership.

## The community bank with a big HEART



When United Way was looking for a partner to help bring the joys of a real Thanksgiving dinner to families in need, we turned to Roselle Savings Bank. This community bank proved to have a big heart, providing a wide array of food (everything but the turkey!) that helped support a Thanksgiving dinner for **40 Roselle families**. We are proud to Live United with a partner as dedicated to the communities they serve as Roselle Savings Bank!

Janice Ritz, Senior Vice President, Roselle Savings Bank pictured left, after collecting food items from the bank's employees

## Everyday, ordinary people accomplish extraordinary things by volunteering.

We are grateful for volunteers who give of their time, resources and expertise in order to help all those in need. Here is what a few volunteers had to say during our Stuff the Bus campaign as to why they volunteer.



"I like putting smiles on peoples faces and helping others in need" -Ashley, FedEx



"It's a cool nice thing to do." -Kylie & Annabel

united way is an

# advocate



Pre-K Our Way is a nonprofit, nonpartisan effort that helps communities bring high-quality pre-k education to children in New Jersey. Targeted community outreach efforts and Campaign for Pre-K Expansion led the way in making pre-k expansion a priority in the state of New Jersey – In July 2017, the state budget included \$25M for pre-k expansion.



As a strong voice for quality education, United Way of Greater Union County has partnered to coordinate community efforts on behalf of Pre-K Our Way and continues to advocate to bring high-quality Pre-K to all three and four year old children throughout New Jersey. The expansion has been specific to five Union County communities in Hillside, Linden, Rahway, Roselle and Winfield.

"Because I've been blessed and we need to all help each other"

-Shirley,  
Santander Bank



Photography by Delilah Williams





Photography by Delilah Williams

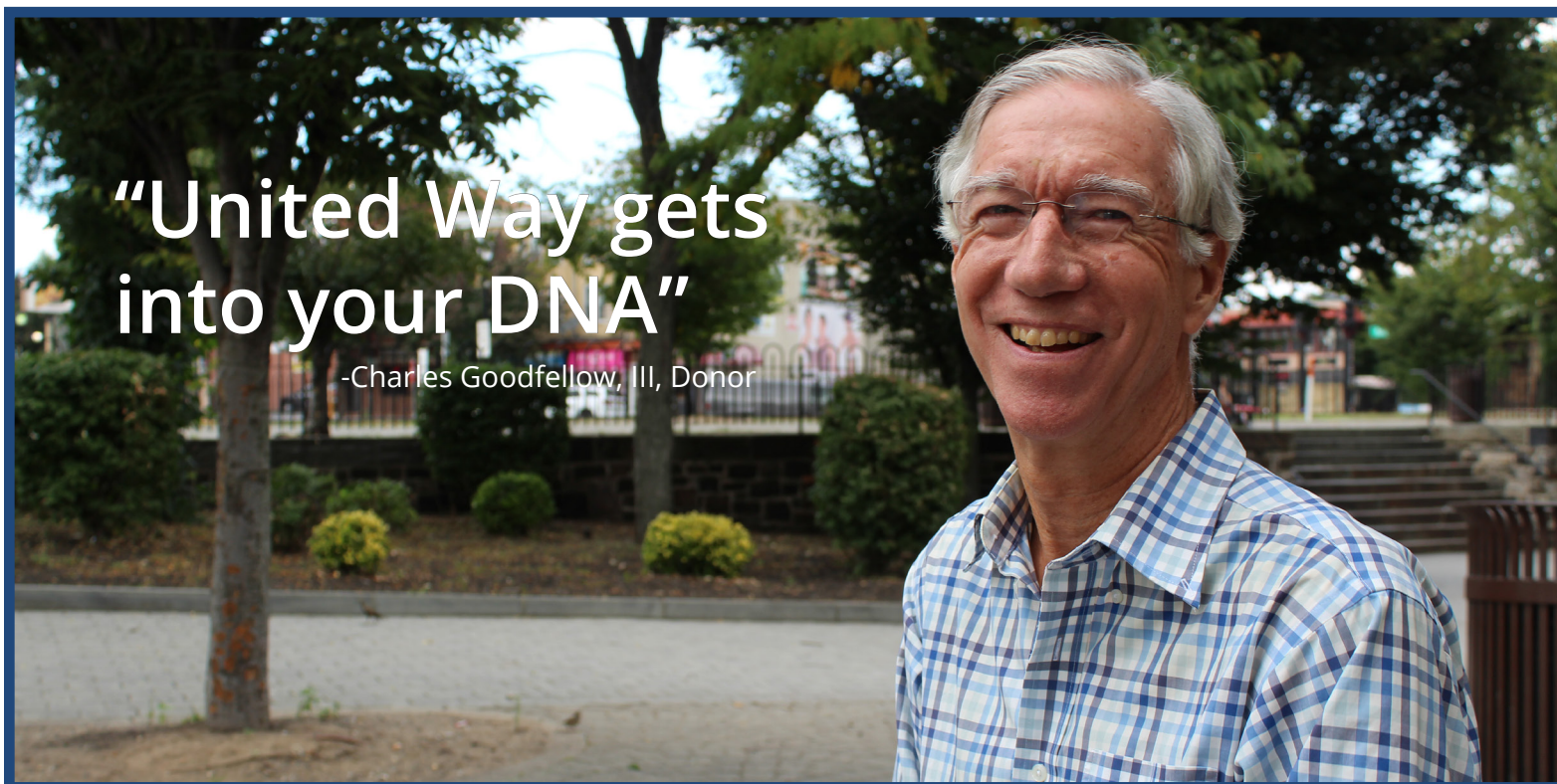
Helen Aron has devoted her life to serving others. A longtime resident of Scotch Plains, Aron founded the ESL (English as a Second Language) program at Union County College, where she taught for much of her career. Today, she serves on the Board of Directors for a mental health counseling and support organization, and also helps to provide college scholarships for young women.

**Throughout all this, the constant in Helen's life has been support for United Way. "When I was ever not aware?" she quipped when asked about when she became aware of our efforts. A proud donor for many decades, Helen explains that what sets United Way apart is that "[Y]ou get a lot**

**for your contributions, because United Way gives to so many organizations."** She trusts us to use our contributions wisely, too, adding "I am giving to groups I know have been thoroughly vetted – I don't have to look anything up myself."

Helen hopes that her story will inspire more individuals like her to Stand United. When you give to United Way of Greater Union County, she notes, "You are giving to your local community," making it a truly impactful way to make a difference.

**Individual contributions from donors make such an tremendous difference in our fight for quality education, financial stability, health and family strengthening.** Our County wide Campaign successes are made possible by individuals of all ages and backgrounds– and give generously to our cause. Contributions made by dedicated supporters like Helen Aron and Chuck Goodfellow guided UWGUC to a **5% increase** since 2015, both among total donations and total amount of donors to the County wide Campaign. In today's changing corporate climate, support from individuals matters more than ever.



Supporting the work of United Way in Union County has been a lifelong commitment for Charles Goodfellow, or Chuck as he likes to be called. **His lifetime commitment to our mission makes him one of our most prolific and long-standing donors. As he put it, "United Way gets into your DNA".**

When he was a boy living in Cranford, his parents were active volunteers with United Way, thus inspiring him to carry on their commitment throughout his entire life. In addition to donating and volunteering with the Cranford United Way prior to its merger with United Way of Greater Union County, Goodfellow gave annually for more than 44 years.

Now retired, he and his wife Mary, remain actively involved in various causes however, he notes that it's our county-

sized organizational model that makes us far more effective in making the most of every dollar donors contribute. He's right. 90% of every dollar donated to United Way of Greater Union County goes to programs and services within Union County. Goodfellow believes that for those that can help, should help, saying, **"You should share, [because] United Way shares it where it helps the most."**

When asked, what would you like readers to know, he said, **"I want people to appreciate all the good work United Way does,"** With his commitment to Standing United as strong as ever, United Way of Greater Union County is proud to call him a lifetime friend.



annual campaign giving go

# a long united way

Our corporate donors give in so many ways. They're on the ground with us- raising funds, advocating and volunteering in support of our programs. **46 companies currently partner with us on annual fundraising campaigns, special engagement projects and volunteer initiatives.** Employees from companies like C.R. Bard and FedEx are just as passionate about helping to create positive impact as we are.

For C.R. Bard, an industry leader in ground breaking medical devices and therapies, corporate social responsibility is more than a public relations exercise, its sound business strategy that strengthens customer loyalty, increases employee satisfaction and improves the bottom line.

Corporations like C.R. Bard often go the extra mile to give a little something back to their employees, the community, and the world at large. They've developed a solid reputation for going out and doing some good, turning their success into an opportunity to help others.

Whether it's their participation in our Annual Employee Workplace Campaign, where employees participate in a series of fun activities in order to raise funds such as the Bard BBQ, a silent auction, a health fair, and Pancake Breakfast or, helping to provide back-to-school supplies during our Stuff the Bus campaign or, supporting our local community needs by dedicating their time where they live and work locally and nationally. Bard is committed to upholding the highest standards in their interactions with customers, colleagues, and the communities in which they live and work.

We are grateful for C.R .Bard's continued partnership in helping us to build Stronger Families & Stronger Communities and for the many ways they have made a difference in the world by keeping its mission at the forefront of everything they do.



On the ground: C.R. Bard employees raises funds for United Way at their annual fundraising barbecue in September

“For many years, we have  
partnered with the United Way  
because of their educational  
programs, community program  
initiatives and other noble  
efforts that touch countless  
lives in meaningful ways.”

-Linda Hrevnack,  
Manager, Community Affairs &  
Contributions , C.R. Bard, Inc.  
(second from right)



Photography by Delilah Williams

Caring volunteers: FedEx employees and children who attend the Rahway Community Action Organization are all smiles during Stuff the Bus campaign.

Like so many of our corporate partners, FedEx has been a long-standing strategic partner for United Way of Greater Union County. Generous gifts from FedEx employees have provided the financial and moral support needed to continue our mission.

United Way of Greater Union County and the communities we serve have benefited from their faithful financial contributions over the years. They have demonstrated a deep commitment to our work of providing much-needed assistance to children and families in all parts of our area, connecting them to the information and services they need. Our ability to make the most of the support we are given makes it possible to maintain and grow these initiatives.

FedEx support has repeatedly played a key role in a number of our campaigns such as with the annual Stuff the Bus where they volunteered and helped provided schools supplies and, their annual FedEx Golf Outing, for employees passionate about giving back to Union County residents.

We are continually inspired by the dedication and generosity of donors like FedEx who answer the call to give again and again.

“The FedEx culture of giving back enhances our relation with the community and results in a better place to live and work for the company, our employees, and the people who live there already. Our relationship with the United Way of Greater Union County who is a strong proponent of building families and programs to better lives.”

-Jerry Alvare, Regional Manager,  
FedEx Holdings



# special events

## Annual Signature Event Raises Funds to benefit United Way Programs and Services



L to R: Alison Yablonowitz, UWGUC Board Chair; Frank Radelunas and Frank Caragher, recipient of the Dell Radelunas Award



L to R: David Deibert (Enterprise Holdings); Heart of the Community- Young Leaders; Tina Earley (Elizabethtown Gas); Circle of Excellence and Joe Abrahams (NuStar Energy) Heart of the Community-Champions



A. Yablonowitz; Councilwoman Patricia Perkins-Auguste, Champions of the Common Good and James W. Horne, Jr., UWGUC President and CEO



Far left, Stan Boroweic (Linde North America) Community Impact Circle of Excellence and middle right, Linda Hrevnack (C.R. Bard) Visionary Pacesetter



Right, Mike Stellato, Callan Associates - Visionary Award



Left, Aeisha Hayward, Concrete Rose Project - Rising Star Award

United Way's signature Annual *Celebration!* event recognizes community and business leaders who share in our vision, mission and commitment and who live and/or work in Union County, North Plainfield and South Plainfield, NJ. Each year, our event brings together a diverse group of corporate partners, non-profit leaders, stakeholders, elected officials and municipalities to recognize and celebrate the successes of the prior year's campaign and, to also highlight the extraordinary work of influential leaders who give of their time and resources for the greater good.

On June 15, 2017, it was an Evening of Inspiration as more than 120 guests gathered at the Westwood in Garwood, NJ for the event. There were eleven honorees (pictured above) including Investors Bank and Celgene Corporation (not in attendance). The event also included a 50/50 cash raffle with the winner being announced that evening. Over \$30K was raised and benefited programs and services funded by United Way of Greater Union County.

We especially thank event sponsors: C.R. Bard, Callan Associates, Comcast, Doherty, Inc., Linde North America, Elizabethtown Gas, Elberon, Enterprise Holdings, Infineum USA, NuStar Energy, Union County Democratic Committee, The Caragher Family, The Musial Group and UWGUC Board of Trustees for their generous contribution to the event.

Photography by Delilah Williams

## 2016-2017 financials

	Unaudited 8/31/2017	Audited 8/31/2016
<b>Campaign Contributions:</b>		
Regular Campaign Contributions	1,768,899	2,278,832
Non-Recurring Campaign Contributions	-	208,258
Total Campaign & Other Contributions	1,768,899	2,487,090
<b>Other Revenue:</b>		
Government Grants	2,001,262	2,053,099
Special Events - gross	42,285	15,080
Incoming Designations	664,375	391,680
Other Grants	238,558	222,319
Other Revenues	112,764	121,008
Total Other Revenue	3,059,244	2,803,186
<b>Total Revenue</b>	4,828,144	5,290,276
<b>Expenses:</b>		
Program Services:		
Distributions to Agencies in GUC	110,412	399,581
Donor Designated Contribution	1,358,883	1,273,920
Other Grants	235,461	233,341
Government Grants	1,982,265	2,105,090
Direct Program Services	695,573	800,715
Total Program Expenses	4,382,594	4,812,647
<b>Supporting Services:</b>		
General & Administrative	312,000	319,182
Fundraising	132,000	142,293
<b>Total Supporting Services</b>	444,000	461,475
<b>Estimated Uncollectible Contributions</b>	102,678	108,300
<b>Total Expenses</b>	4,929,271	5,382,422
<b>Net Assets at the Beginning of Year</b>	2,203,513	2,328,236
<b>Changes in Net Assets before Non-Operating</b>	(101,128)	(92,146)
Non-Operating	112,715	(32,577)
Changes in Net Assets after Non-Operating	11,587	(124,723)
<b>Net Assets at End of Year</b>	2,215,100	2,203,513
Operating Expense Ratio	9%	11%



# leadership giving society

**With Heartfelt Thanks** to influential leaders who provide inspiration and motivation for others in caring for our community. Our Leadership Givers understand that like any investment, the benefits extend well beyond. The people helped through their generous gifts, in turn, affect our communities for years to come.

United Way's Leadership Giving Society was created to recognize members of our community who demonstrate an exceptional commitment to helping others.

**LA SOCIETE NATIONALE**  
**\$100,000 or more**

C.R.BARD  
Linde  
UPS

**ORDRE DE FRATERNITE'**  
**\$75,000 - \$99,999**

Wilf Family Foundation  
Wells Fargo  
Bank of America

**ORDRE D'EGALITE'**  
**\$50,000 - \$74,999**

Enterprise  
NuStar

**ORDRE DE LIBERTE'**  
**\$25,000 - \$49,999**

Celegene  
Elizabethtown  
Infineum  
Merck  
J.C. Kellogg Foundation  
PSE&G

**MEMBRE DE CONSUL**  
**\$10,000 - \$24,999**

Glenn D. Engel  
Bank of America  
  
Timothy M. Ring  
C. R. Bard, Inc.  
  
Lori A. Whitehead  
Davol, Inc.  
Costco  
Comcast  
Callan & Associates  
TD BANK

**PLATINUM**  
**\$7,500 - \$9,999**

Abtihal Raji-Kubba  
Lutonix, Inc  
  
Eileen Rizzo  
Macy's  
FedEx  
Phillips 66

**GOLD**  
**\$5,000 - \$7,499**

Curtiss Brown  
C. R. Bard, Inc.  
  
Patricia G Christian  
C. R. Bard, Inc.  
  
Christopher Stephen Holland  
C. R. Bard, Inc.  
  
Mr. and Mrs. James Meyer  
  
Mark M. Walaska  
Glens Falls Operation  
  
Alison G. Yablonowitz

**SILVER**  
**\$2,500 - \$4,999**

Joseph J. Abrahams  
NuStar Energy  
  
Eileen M Brown  
Linde North America Inc.  
  
Peter Callegari  
Celgene Corporation  
  
David J Ciavarella  
C. R. Bard, Inc.  
  
F. Chandler Coddington Jr.  
  
Melanie G Damus  
  
Cajetan Thomas Defeo  
C. R. Bard, Inc.  
  
John A DeFord PhD

C. R. Bard, Inc.  
  
Antonio Dieujuste  
  
Nelson &Carolyn W. Dittmar  
  
William C. Dudley  
Federal Reserve Bank of New York  
  
Augustus Felix  
Davol, Inc.  
  
Freeport McMoran

Brian D Ferriola  
Linde North America Inc.  
  
Gennett Fleming  
  
Jennifer Ann Goodbody  
Linde North America Inc.  
  
Charles Goodfellow III

Daniel A. Gregoire  
C. R. Bard, Inc.  
  
Robert Anthony Johnson  
C. R. Bard, Inc.  
  
Dane Thomas Kasper  
C. R. Bard, Inc.  
  
Sharon Kornspan  
Macy's

Stephen A. Kozsan  
C. R. Bard, Inc.  
  
R Krish Krishnamurthy  
Linde North America Inc.

David M. Kristol  
  
Betty Denise Larson  
C. R. Bard, Inc.  
  
Brian J. Leddin  
C. R. Bard, Inc.  
  
Larry J. Lockhart

Frank Lupisella Jr.  
C. R. Bard, Inc.  
  
Szczepaniak Lynne  
Johnson & Johnson  
  
James (Lex) A. Maultsby  
Bank of America  
  
Patrick F Murphy  
Linde North America Inc.

Peter M. Palermo  
Davol, Inc.  
  
Thomas R Schroeder  
C. R. Bard, Inc.  
  
Gin Schulz  
C. R. Bard, Inc.  
  
Jennifer Stryker  
Bard Access Systems  
  
Ian S. Vaughan  
NuStar Energy  
  
John H. Weiland  
C. R. Bard, Inc.

**BRONZE**  
**\$1,000 – \$2,499**

Daisy Aguilar-Guzman  
Bard Shannon  
  
Janet Ahern  
Celgene Corporation  
  
Regina Carol Alexander  
Linde North America Inc.  
  
Bank of America  
  
AT&T

Bert Armeny  
Infineum USA L.P.  
  
Michael E. Aswad  
  
Atul M Athalye  
Linde North America Inc.

Dave Awer  
UPS  
  
Israel Ayala Jr.  
Nustar  
  
David Bamiro  
Enterprise Rent-A-Car

Adam Barber  
C. R. Bard, Inc.  
  
Bruce M. Baron  
  
Carolyn Barry  
Celgene Corporation  
  
Catherine M. Baxter  
AT&T

Jim C. Beasley  
C. R. Bard, Inc.  
  
Michael J Beckman  
Linde North America Inc.  
  
Raymond Beier  
  
Anna Belin-Pyles  
  
Leonard B. Berkowitz  
  
David P Blaber  
Bard Access Systems  
  
Graham R. Blackman-Harris  
FedEx CDWA  
  
Brian Blair  
Linde North America Inc.  
  
Stanley P. Borowiec  
  
John W Boullie  
C. R. Bard, Inc.  
  
William J. Bradley  
Johnson & Johnson  
  
David M. Brennan  
UPS  
  
Robert&Valerie Brewster  
  
Kevin Britton  
C. R. Bard, Inc.  
  
Charles M. Brooks  
Linde North America Inc.  
  
Donald Bucciarelli  
  
Alan & Carol Campell  
  
David Cano  
Bard Peripheral Vascular, Inc.  
  
Stephanie G. Carmel  
  
Andrea Casper  
C. R. Bard, Inc.  
  
Peter G. Chergotis  
NuStar Energy  
  
Sandra Collazo  
Celgene Corporation  
  
Robert E. Collins  
C. R. Bard, Inc.  
  
Lymarie Colon-Rodriguez  
Bard Shannon  
  
William Garth Conrad  
Bard Peripheral Vascular, Inc.  
  
Thomas Cooper  
NuStar Energy  
  
Roberto H. Correa  
BOC  
  
Frazer Costa-Alvarado  
Bard Shannon

Charles Michael Crowe II  
C. R. Bard, Inc.  
  
Bruce A Cuddeback  
Linde North America Inc.  
  
Richard Dahme  
Linde North America Inc.  
  
Michael A. D'Aiuto  
NuStar Energy  
  
Aldona M. Daukantas  
C. R. Bard, Inc.  
  
Stacey Davis  
Celgene Corporation  
  
Michael Deblasio  
Enterprise Rent-A-Car  
  
David P. Deibert  
Enterprise Rent-A-Car  
  
Jimmy Dejesus  
UPS  
  
Paul M Delatore  
C. R. Bard, Inc.  
  
Jetzabeth J. Deliz-Quinones  
BOC  
  
Bruce A Denny  
Glens Falls Operation  
  
Lawrence A. Dionne  
Davol, Inc.  
  
Eric A. Douglas  
NuStar Energy  
  
Champlin Erin  
Johnson & Johnson  
  
Johnel Evans  
Bard Access Systems  
  
Eaton  
  
Adrienne Farid  
Celgene Corporation  
  
Augustus Felix  
Davol, Inc.  
  
Kurt Fischer  
C. R. Bard, Inc.  
  
Daniel E Fisher  
Linde North America Inc.  
  
Adam Harrell Fox  
Lutonix, Inc  
  
Robert J Fredericks  
Bard Access Systems  
  
Barbara Gaba  
  
Julie W Gaddis  
Linde North America Inc.  
  
Todd Garner  
C. R. Bard, Inc.

Caron Lee Gleason  
Bard Peripheral Vascular, Inc.  
  
Jeremy Goldfarb  
Enterprise Rent-A-Car  
  
Lori A Grace  
Lutonix, Inc  
  
Joanna B. Graft  
Bard Access Systems  
  
Jason Greening  
Bard Peripheral Vascular, Inc.  
  
John P Groetelaars  
C. R. Bard, Inc.  
  
Luke T. Harada  
C. R. Bard, Inc.  
  
Robert Hasbrouck  
  
Daniel Herbst  
Enterprise Rent-A-Car  
  
Matthew Hoffmann  
Celgene Corporation  
  
Chip & Mary Lou W. Hogan Jr.  
  
David Hovanec  
Enterprise Rent-A-Car  
  
Pamela J Hubinsky  
C. R. Bard, Inc.  
  
Thomas R. Hutchinson  
Davol, Inc.  
  
Thomas R. Hutchinson  
Davol, Inc.  
  
Kristen Jensen  
Celgene Corporation  
  
Katherine C. Kalin  
Celgene Corporation  
  
Muruganantham Kandhasamy  
Linde North America Inc.  
  
Mary Patricia Keefe  
AGL Resources/ Elizabethtown Gas  
  
Kevin D Kelly  
C. R. Bard, Inc.  
  
O'Brien Kendall  
Johnson & Johnson  
  
Thomas F. Kennedy Jr.  
  
Samrat Singh Khichi  
C. R. Bard, Inc.  
  
Calvin L Klitz  
Bard Medical Division  
  
Nikitas Koroneos  
Enterprise Rent-A-Car  
  
Patti Laboo  
UPS

Betty Denise Larson  
C. R. Bard, Inc.  
Leong Lee  
Linde North America Inc.  
  
Stephen Jeff Lemaster  
Bard Peripheral Vascular, Inc.  
  
Sherry Leonard  
Celgene Corporation  
  
Ken H Lew  
Linde North America Inc.  
  
Edgardo R Lopez  
BOC  
  
Abiel Lopez  
BOC  
  
Scott T. Lowry  
C. R. Bard, Inc.  
  
Sharon M Luboff  
C. R. Bard, Inc.  
  
Brian L. MacLean  
AGL Resources/ Elizabethtown Gas  
  
Macy's  
  
Shirley C. Mangin  
  
Sarah M. McManus  
Johnson & Johnson  
  
Megan Marie Melosi  
Bard Access Systems  
  
Juan F Mendez-Lopez  
Bard Shannon  
  
Jeffrey D. Miller  
Bard Medical Division  
  
Aideliz Miranda  
Bard Shannon  
  
Kevin James Mulkerin  
C. R. Bard, Inc.  
  
Madelyn Myers  
Lutonix, Inc  
  
Gary D. Myers  
Bank of America  
  
Raju S Natarajan  
Linde North America Inc.  
  
New Jersey American Water  
  
Scott A Oberman  
C. R. Bard, Inc.  
  
Georgios Papandreou  
Lutonix, Inc  
  
Michael M. Paraskevas  
NuStar Energy  
  
Maria Paris  
Celgene Corporation



Carl Pasini Johnson & Johnson	Lauren Shores Bard Peripheral Vascular, Inc.
Kristi R Payne Benitez C. R. Bard, Inc.	Arkadiusz Sieczkowski NuStar Energy
Patrick F Perrone Linde North America Inc.	Ryan Silsbe C. R. Bard, Inc.
Gary N Peterson Linde North America Inc.	Alvaro Silva UPS
Kevin N. Phoenix CFM C. R. Bard, Inc.	Gregory S Sippel Linde North America Inc.
Michael Pisack C. R. Bard, Inc.	Jessica W Smith Bard Access Systems
Dennis Poller PhD	Menith Sonhthipanya Bard Peripheral Vascular, Inc.
Gerard D. Porecca C. R. Bard, Inc.	Jeanette Southard Bard Access Systems
Kathleen Preacher Macy's	Allan Spina C. R. Bard, Inc.
Worthem Ramona Johnson & Johnson	Corey E. Stapleton Bard Peripheral Vascular, Inc.
Adam S Rappaport C. R. Bard, Inc.	Jennifer Stryker Bard Access Systems
Carl E Rickenbaugh Bard Peripheral Vascular, Inc.	Gary & Cynthia Taffet
Timothy M. Ring C. R. Bard, Inc.	John S. Thomaides AkzoNobel
Scott J Rittman C. R. Bard, Inc.	Deborah Holly Thomas Celgene Corporation
Patrick Daniel Roche C. R. Bard, Inc.	John Traverse Celgene Corporation
Timothy J. Roessler NuStar Energy	John Van Vleet Bard Peripheral Vascular, Inc.
Ana P. Royval-Chavarria BOC	John H. Vandenburg C. R. Bard, Inc.
Nelson Samot Linde North America Inc.	Robert R Vankirk Linde North America Inc.
Erik J. Sanchez Macy's	David A. Varner United Way of Orange County
Daniel Geary Sayers C. R. Bard, Inc.	Kristina Vavallo Enterprise Rent-A-Car
Anne Schmidt Bard Access Systems	Maynor Venegas Linde North America Inc.
Margaret A Shannon Linde North America Inc.	Jose Villanueva-Santiago Bard Shannon
Eric J. Shick C. R. Bard, Inc.	John M. Walcott Johnson & Johnson

Keith A. Wargo BMO Harris
John H. Weiland C. R. Bard, Inc.
Steven Weiner Esq.
Linda S Wood Glens Falls Operation
Robbin G Woods Linde North America Inc.
Michael Xouris NuStar Energy
Corey A. Zeeger NuStar Energy
Christopher Ziemian NuStar Energy

## We also thank local, state, municipal and federal agencies, as well as foundations that join with United Way of Greater Union County on the many programs that benefit children and families all across Union County.

Through our strategic partnerships with dedicated organizations like the Union County Board of Chosen Freeholders, together we are changing lives and impacting communities.



The Union County Board of Chosen Freeholders has been a committed partner of United Way of Greater Union County for many years. Initiatives such as Focus on Families have helped to launch the Rahway Family Success Center and the James Kellogg Multicultural Family Success Center in Elizabeth, providing wrap around services to families in need and, providing support to GRACE (Giving and Receiving Assistance for our Community Essentials), serving Summit families with weekly supplies of much needed produce, dairy, bread and prepared food. They, along with the Workforce Development Board have been instrumental in the approval of the Youth Employment and Training Consortium, providing out of school youth with employment opportunities to succeed. Other programs include Flex Funds, which provides a one-time financial assistance to assist Union County families in need of food, clothing, shelter and other necessary services, when no other funding is available; the Union County Arts Program at the JFK Community Center in Rahway, which through the Parks and Recreation and Cultural and Heritage Programs Advisory Board, have recently, expanded the Learning Mi Way Arts, a curriculum to enhance academic readiness and pre-literacy skills to 3 and 4 year old children. And, the Community Development Block Grant, assisting 16 nonprofit organizations in our partnership in services that include abuse and neglected children services, childcare services, disable services, domestic violence services and homeless services. Bruce Bergen (*pictured above*) is the current Chairperson for the Union County Board of Chosen Freeholders.

### In addition, the following organizations have been generously supportive of our efforts:

<b>State of New Jersey</b>	<b>Federal</b>
Department of Children and Families	Health Resources and Services Administration (HRSA) The Ryan White Fund Part A
New Jersey Juvenile Justice Commission	
<b>Foundations</b>	Federal Emergency Management Assistance (FEMA)
Robert Wood Johnson Foundation- New Jersey Health Initiative	
The Grotta Fund for Senior Care	

### And with grateful thanks to our corporate partners that participate in annual campaigns, engagement projects and volunteer efforts:

AGL Resources/Elizabethtown Gas	Deloitte & Touche	Lakeland Bank	PSE&G
Allstate Insurance	Eaton Corporation	Lerner David & Associates	Roselle Savings Bank
Bank of America	Enterprise Rent-A-Car	Lindabury, McCormick,	Santander Bank
Bed Bath & Beyond	FedEx Corporation	Estabrook & Cooper, P.C.	Stop & Shop Supermarkets
Callan & Associates	First Energy	Linde North America	Target
Celgene Corporation	Freeport-McMoran Cooper &	Mckinsey & Company	TD Bank
Cincinnati Thermal Spray	Gold	Merck & Co.	TJX Companies
Cintas	Gannett Fleming	New Jersey American Water	Union County Savings Bank
Comcast	General Electric	Northfield Bank	UPS
CommScope	Guardsmark	NuStar Energy	Wells Fargo
Costco	Infineum USA	PNC Bank	WPI Communications
C.R. Bard	Johnson and Johnson	Provident Bank	





Need Help or know someone who does?



Our free telephone and web referral service connects residents to the resources they need. This service is confidential and available 24 hours-a-day / 7 days a week, in more than 150 languages. 2-1-1's comprehensive database details resources such as state and federal programs; energy assistance programs sponsored by energy providers; non-profit organizations that have made it their mission to help fulfill an unmet need; and local community resources. **Dial 2-1-1 from any phone or visit the website at [www.nj211.org](http://www.nj211.org)**

- On any given day 2-1-1 offers access to:
- Resources for Basic Human Needs: food banks, clothing, shelters, rent assistance, affordable housing, utility assistance
  - Physical and Mental Health Resources: medical information lines, crisis intervention services, support groups, counseling, drug and alcohol intervention, rehabilitation, health insurance programs, Medicaid and Medicare, maternal health, children's health insurance programs
  - Employment Support: unemployment benefits, financial assistance, job training, transportation assistance, education programs
  - Support for Older Americans and Persons with Disabilities: home health care, adult day care, Meals on Wheels, respite care, transportation and homemaker services
  - Support for Children, Youth and Families: Quality childcare, after school programs, Head Start, family resource centers, summer camps and recreation programs, mentoring, tutoring, protective services
  - Volunteer opportunities and donations



How you can help

When you make a monetary contribution, donors can rest assured that their tax-deductible gift will go a long way in providing programs and services funded by United Way of Greater Union County whose mission is to improve lives and build strong communities. Thank you for your support.

Name: \_\_\_\_\_

Address: \_\_\_\_\_

City, State, Zip: \_\_\_\_\_

Company / Organization: \_\_\_\_\_

Telephone: \_\_\_\_\_ E-mail: \_\_\_\_\_

☐ I would like to affect change by making a tax-deductible gift made payable to United Way of Greater Union County:

☐ Enclosed, is my check in the amount of \$\_\_\_\_\_ CHECK#\_\_\_\_\_

☐ Please charge my credit card:

\_\_\_\_Mastercard \_\_\_\_Visa \_\_\_\_Amex

Card# \_\_\_\_\_ Expires: \_\_\_\_\_

Signature: \_\_\_\_\_

☐ \$25

☐ \$50

☐ \$100

☐ \$200

☐ \$500

☐ \$ \_\_\_\_\_

I would like to sign up to receive regular updates

- I am interested in learning more about the following (please check all boxes that apply):
- ☐ Advocating for social service and human needs issues

☐ Season of Caring (Food / Toy / Clothing Drives)

☐ Internships

☐ Special Events

☐ Leadership Giving

☐ Volunteering

☐ Women United

☐ Workplace Campaigns

☐ Fundraising

**United Way does not share or sell personal information. Based upon your contact preference we will send you alerts on whats happening.**  
**Mail this form to: United Way of Greater Union County • 33 West Grand Street • Elizabeth, NJ 07202**



Smartphone users: Scan it. Donate.



Facebook: United Way of Greater Union County  
Twitter: [twitter.com/liveunitednj](https://twitter.com/liveunitednj)  
Youtube: UWGUC1



# Thank You for creating possibility.



We hope you enjoyed this glimpse about how your involvement creates a positive collective impact on children and families all across Union County. United Way of Greater Union County is grateful for your support in helping to create the possibility for a better tomorrow and we look forward to your continued support in helping us build stronger Families and Stronger Communities.

**Strengthening families since 1969**, United Way of Greater Union County fights for the education, financial stability, health and family strengthening for residents in Union County, North Plainfield and South Plainfield. By partnering with nonprofit agencies, key stakeholders, businesses, government officials, individuals, schools and volunteers to create positive lasting sustainable change in the community, we are a dedicated to identifying and addressing critical community issues to improve the lives of children and families. Today, United Way of Greater Union County is a pre-eminent community based leader, partner and investment choice in these communities.

## LIVE UNITED

### GIVE.

Every gift is invested in programs that directly serve our community. Start a workplace campaign, respond to our direct mail campaigns, or visit us online at [uwguc.org/donate](http://uwguc.org/donate). All funds donated to United Way of Greater Union County are tax-deductible.

### VOLUNTEER.

When we reach out a hand to one, we influence the condition of all. As a volunteer, you make a hands-on contribution to the community.

### ADVOCATE.

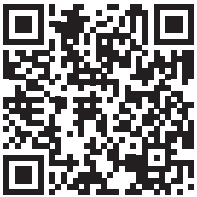
Make change happen by using your voice. Whether speaking out to improve community conditions, or contacting local or state government, you will help inspire hope and create opportunities for a better tomorrow.

To learn more about our focus, please contact us at 908.353.7171, visit our website at [uwguc.org](http://uwguc.org) or email us at [info@uwguc.org](mailto:info@uwguc.org).





United Way of  
Greater Union County



Smartphone users:  
*Scan it. Donate.*

33 West Grand Street | Elizabeth, NJ 07202

908.353.7171 | [uwguc.org](http://uwguc.org)

Stay connected

